

# Annual Report 2023-24

SCAN ME!  
TO VISIT OUR WEBSITE







# Northeast Narratives:

*Pioneering Progress for a Unified Bharat*





## Our Domains



**Disaster  
Management**



**Education**



**Livelihood & Skill  
Development**

Sewa International began as a movement in 1993 to engage the Indian Diaspora worldwide. It encouraged people living abroad to remain connected with Indian roots through contributions to humanitarian causes locally and in India, especially in times of natural calamities like floods, earthquakes, cyclones, tsunamis, pandemics etc, which cause large-scale distress, and need huge resources for recovery. The movement has spread its wings worldwide to more than 20 countries now.

# About Sewa International

Sewa International is an organization with a mission to nurture institutions of social impact and serve humanity. In our two decades of work, we have worked across the length and breadth of the nation to inculcate the spirit of Sewa as a means for societal transformation or Parivartan. Our direct projects span across India, and globally across 25+ countries as the 'Sewa' movement.

## Our Vision

Sewa International as a premier non-profit, would live in a world of equality, where everyone is happy, enjoys good health, has equal growth opportunities and lives in balance with nature. In the event of any disaster, Sewa International will be called in and be among the first to serve.

## Our Mission

Sewa International serves humanity in distress, aids local communities, and promotes volunteerism. We engage our beneficiaries to be agents of change in development and strive to make progress broad-based.



**Health &  
Sanitation**



**Environment**

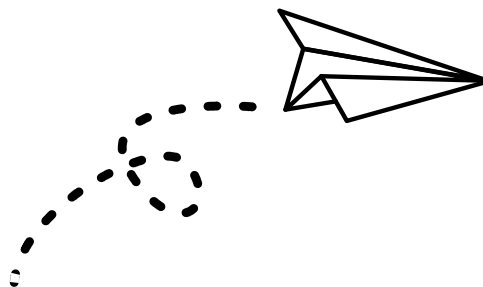


**Leadership  
Development**

In India, Sewa International was established in 1997 as a registered non-profit trust, based on the Indian ethos of 'Service before Self' and "World is One Family". Since its inception, the organisation has relentlessly been serving humanity in distress, irrespective of caste, creed, colour, religion, race or region. It is presently working in the domains of health, education, livelihood generation, environment, skilling across 20+ states in India, with direct interventions as well as with the help of committed grassroots organisations.



# Table of Content



## Introduction

• Our Governing Team .....	08
• Chairman's note.....	09
• Foreword.....	10
• Why North East?.....	11

## Disaster Management

12

• Disaster at Glance .....	13
• Powerful Flood Drenches .....	14
• Tamil Nadu Flood(Cyclone Michaung) .....	16
• Delhi Flood .....	17
• Himachal Flood .....	18
• Sikkim Flood .....	19
• Andhra Pradesh Flood .....	20
• Joshimath Relief .....	20
• Balasore Train Accident .....	21
• Cyclone Biparjoy: Kutch Disaster Relief .....	21
• Manipur Relief Activity .....	22
• Tapovan Rehabilitation .....	23
• Disaster Preparedness & Response .....	24
• SCODE .....	24

## Livelihood & Skill Development

26

• Livelihood & Skill Development at Glance .....	27
<b>I. Women Empowerment.....</b>	28
• Approaches .....	29
• Women Entrepreneurship Development .....	31
• Sanitation, Health and Empowerment .....	32
• Skill Development of Farmers for Alternative Livelihood .....	33
• ALIGN-Alternative Livelihoods & Income Generation Initiative .....	34
• Women Empowerment and Entrepreneurship Program .....	35
• Sewa Srujan - Self Help Group .....	36
<b>II. Agriculture &amp; Green Jobs .....</b>	37
• Sewa Krishi: Upskilling Honey Farm .....	38
• Seed Bank Development .....	39
• HARELA .....	40
• Community Farming .....	41
• Upskilling Farmers for Integrated Livestock Development (Dairy) .....	42
• Goat Rearing Initiative .....	43
<b>III. Resilient Communities &amp; Sustainable Living .....</b>	45
• Sustainable Livelihood through Handicraft Weaving: Wool Craft for Bhotiya Tribe .....	46
• Micro Entrepreneurs and Skill Development .....	47
• Pradhan Mantri Kaushal Kendra .....	48
• Rozgar Mela .....	49
• Sewa Mela .....	50
• Sewa International Design & Development Centre- SIDDC .....	51
• Sustainable Institution Building and Entrepreneurship Development .....	52
• Himsampada Uttarakhand .....	53

## Health & Sanitation

55

• Health & Sanitation at a Glance .....	56
<b>I. Water, Sanitation and Hygiene .....</b>	56
• WASH- Water, Sanitation and Hygiene .....	57
• SHE: Sanitation, Hygiene and Empowerment .....	59
• Menstrual Hygiene Awareness Program for Adolescent girls .....	60



<b>II. Uncovering Health Horizons .....</b>	<b>61</b>
• Mobile Medical Unit- Sewa Aarogyam .....	62
• Adolescent project .....	63
• Salt Farmers Support Program .....	64
• Aahar Kranti Project .....	65

## Education ..... 66

• Education at a Glance .....	67
<b>I. Inclusive Education .....</b>	<b>68</b>
• Sponsor A Child .....	69
• UPLIFT .....	71
<b>II. A Learning Continuum .....</b>	<b>72</b>
• School Adoption Program .....	73
• Science, Technology, Engineering, and Mathematics .....	74
<b>III. Equitable Education Accessibility .....</b>	<b>75</b>
• SEEK – School Kit Distribution Project .....	76
• School Solar Support .....	77
• Akshar Bharati .....	78
• DEEKSHA .....	78
• Sainik Parivar Kalyan Niwas.....	78

## Environment ..... 79

• Environment at a Glance .....	80
<b>Environment, Education &amp; Exposition .....</b>	<b>81</b>
• PRAWAH: The Eco Mission .....	82
• ARECA-NUT Leaf Plate Production Unit .....	85
• Beach Cleaning Drive .....	86
• Street Play .....	87

## Leadership Development ..... 88

• Sewa Fellowship .....	89
• Program Philosophy .....	90

## Community Engagement ..... 91

## Research ..... 92

• Study on Equine Dung Management in Kedarnath by Sewa International & District Tourism Development Officer, Rudraprayag. 2023 .....	93
• Cross-cutting Two Strategies from the Himalayan States: Accelerating SDGs through Women-led Development Processes by Sewa International and YS Parmar University .....	94
• Exploring the Landscape of Sickle Cell Anaemia among tribes in Wayanad, Kerala .....	95

## Events ..... 96

• Talk4Tomorrow .....	97
• Deepotsav 2023 .....	99
• Youth Conclave .....	100
• Interaction with Laxmi Narayan Tripathi .....	101

<b>Global Presence.....</b>	<b>102</b>
-----------------------------	------------

<b>AWARDS.....</b>	<b>104</b>
--------------------	------------

<b>Sewa in Media .....</b>	<b>105</b>
----------------------------	------------

<b>Finance Report .....</b>	<b>106</b>
-----------------------------	------------



# Our Governing Team



**Sh. Mrugank Paranjape**  
*Chairman*



**Sh. KG (Shyam) Parande**  
*Secretary  
Global Coordinator*



**Sh. Rakesh Mittal**  
*Treasurer*



**Sh. Ashok Goel**  
*Trustee*



**Sh. Jadhav Bhai Gorasia**  
*Trustee*



**Dr. Alka Mandke**  
*Trustee*



**Sh. Sidharth Agicha**  
*Trustee*



**Sh. Rajiv Agarwal**  
*Trustee*



**Sh. Mukesh Aggarwal**  
*Trustee*



**Sh. Bimal Kumar Kedia**  
*Trustee*



**Smt. Indumati Rao**  
*Trustee*



# Steering Progress: A Note from the Chairman

## Sh. Mrugank Paranjape

It gives me great pleasure to present the Sewa International Annual Report to you. Sewa International is now active in over 20 states across India. We are nearing the completion of 3 decades of service and we collaborate closely with numerous local organizations in our ongoing mission to serve communities in distress, offering support and care to those in need.



Continuing our commitment to remain at the forefront in serving society during the time of a crisis, Sewa International responded to 10 different disasters during last year, the details of which are captured in this annual report. The organisation continues to follow the 3Rs: Rescue, Relief and Rehabilitate, while supporting the affected populace and helping them to be rehabilitated to their normal lives. Additionally, our organization prioritizes disaster preparedness, recognizing proactive planning and readiness as a crucial component in mitigating the impact of potential disasters. Our volunteers tirelessly work in remote areas of India, whether in border regions or tribal communities, with the aim of fostering holistic development and helping those who have been left behind move forward.

Apart from our focus in Disaster Management, our work now spans across 5 more areas namely Education, Livelihood and Skill Development, Health and Sanitation, Environment and Leadership Development. We must make special mention of our Sewa Fellowship program – an attempt to build and nurture grassroots leadership where the first cohort of fellows have graduated and the third cohort has embarked on their new journey. Our projects serve as a bridge between the present and the future, working with communities now while preparing for what lies ahead.

This year's annual report highlights our focus on the Northeast, one of our key areas of work. Sewa International has decided to diversify its scope and will work in the Border and Sensitive Areas of India. We look forward to bringing more updates on this in the years to come.

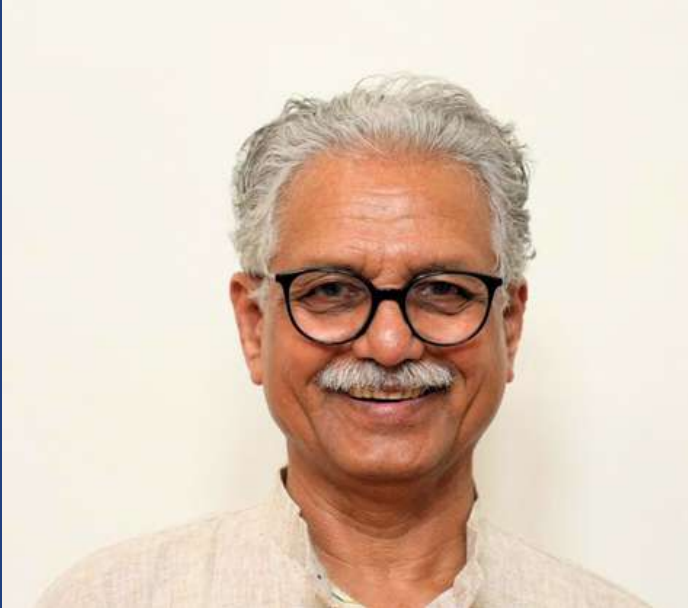
The achievements of Sewa International are a testament to the contributions of our donors, volunteers, mentors and staff and I am confident that this will continue to grow in the years to come. On behalf of the Sewa International family, I extend my best wishes to all of you as you review this annual report.



# A Way Foreword

**Sh. KG (Shyam) Parande**

Secretary & Global Coordinator



## **Serving with humility, enriching the humanity**

Bharatiya Chintan- Indian thought – is holistic and doesn't differentiate between caste, creed, race, nationalities, or even form of the life when we are informed since childhood that the whole creation is divine. Sewa International has envisioned the same principle in its vision like "A harmonious and happy world where humanity experiences oneness through sewa". Sewa International takes pride being part of the C20 during Bharat's G20 Presidency wherein Sewa was asked to be a partner for International coordination in Civil Society 20, the C20. This year, Sewa International represented the Indian delegation to BRICS Civil in Moscow in the Month of July, another feather in the cap for Sewa International.

Affluent diversity of Bharat is well known all over the world. However, the North-Eastern states of Bharat, popularly known as Seven Sisters is a marvel in diversity with number of communities, cuisine & crops, tribes and forests, rich flora fauna and opulent arts, attires and animals, languages and dialects, mineral wealth and natural bounty. Sewa International has ordained upon itself to serve those wonderful states where the first Sun rays touch the country ahead of the rest.

In consideration of the diversity of the region that forms the foundational strength, we decided to zero in on some regions of the North East where demography is being altered to exploit the weaknesses of the diversity by ulterior forces. It was thoroughly challenging situation at the beginning but the society in general stood firm together with the band of activists, generating trust among the local communities. Partner organizations also played a supporting role with their on ground connect and experience. The situation is so transformed presently that the communities and tribes welcome any foray by Sewa International with open arms.

In the state of Aruncachal Pradesh, there are languages and dialects which are on the verge of getting extinguished. The work to provide a script to a language has achieved great success that influenced the state government to provide financial support our partner organization Research Institute for World's Ancient Traditions Cultures & Heritage (RIWATCH), which had been working in the state for more than a decade and a half. A language on the verge of extinction is seeing a rejuvenation. The Waicho language is being taught in the schools where the tribal students are free to learn their language, which was eulogised by the Hon. Prime Minister in his monthly aired talk "Mann ki Baat".

We are delighted to bring to you this annual report with focuses on the activity in North East. We had been actively serving the region since last 25 years and have served during natural calamities as well as providing solace to the affected sections of the society during human conflicts, like during the recent Manipur incident. Hope you will appreciate this issue focussing on Northeast and appeal you all to volunteer in the region and support the developmental activity in this beautiful region with grand diversity.

# Why North East?

## For This Year's Edition

The Northeastern states of Bharat represent a fertile ground for growth, brimming with untapped potential and opportunities to drive initiatives that contribute to an empowered and progressive nation. Historically, these states have often been marginalized in various efforts, leading to a feeling of disconnection. However, as we move forward, it has become increasingly clear that integrating the Northeast into the larger framework of India's development is not only essential but also transformative.

These states hold immense promise for initiatives across various sectors—be it education, healthcare, or sustainable development—each playing a crucial role in shaping a stronger, more inclusive India. By fostering inclusivity and acknowledging the unique strengths of the Northeastern region, we unlock the potential for substantial growth and innovation, ensuring that these states contribute meaningfully to the vision of a thriving, united Bharat. It is now more important than ever to ensure that the Northeast is not left behind, but is actively involved in driving the future of our nation forward.

In line with this vision, Sewa International is actively implementing a range of transformative initiatives such as RIWATCH, Mobile Medical Units (MMU), and several others. These efforts aim to drive sustainable development and foster inclusivity, ensuring that the Northeastern states are fully integrated into India's growth journey. Through these initiatives, we are not only addressing immediate needs but also empowering communities for long-term progress and resilience.







# T

## Disaster Management

The essence of Sewa International is deeply rooted in the field of disaster management. Over the past 25 years, Sewa International has dedicated itself to social service, particularly in providing aid during natural calamities and in disaster-stricken regions. We feel ecstatic to have delivered rescue, relief, and rehabilitation services to millions of individuals.

Moreover, we have effectively supported communities during floods, cloud bursts, earthquakes, tsunamis, cyclones, disease outbreaks, and droughts, consistently offering crucial assistance in times of need.



# Disaster at Glance

Over the last two decades, Sewa International has navigated through a spectrum of disasters, honing our expertise in crisis response. Our primary focus remains centered on upholding human dignity, mitigating suffering, and safeguarding lives. We believe in serving the humanity by incorporating the ideology of

## 3Rs: Rescue, Relief and Rehabilitate

The organisation stands as a frontline responders during disasters, navigating the unique strategy of Preparedness, Response, Mitigation, and Recovery. From the Bhuj earthquake in 2001 to the Uttarakhand and Kerala floods, the Tapovan glacial burst, and the COVID-19 pandemic, we've honed expertise in comprehensive disaster management.



# 75,717

*Beneficiaries supported*

## 525

Volunteers Engaged

## 3150

Volunteer Hours

## 98

Villages Covered

## 7280

Dry Ration Kits distributed

## 3300

Disaster Relief Kits distributed

## 1410

School Kits distributed

## 39

Medical Camps conducted



# Powerful flood drenches Indian States

2023 has been a disastrous year for India with an unsettling reminder of nature's wrath in form of various natural or man made disasters. The nation witnessed an array of devastating natural calamities that highlighted the urgent need for climate action. This year, India has undergone various types of disasters including violent floods, unexpected cloudbursts, landslides, uncontrolled wildfires and shaking earthquakes echoing a common warning- the climate clock is ticking. The consequences of these events were profound, leaving a trail of destruction and sadness amongst the affected.

States of Himachal Pradesh and Uttarakhand were affected by the deadly flood in the year 2023. The glacial lake outburst flood in Sikkim in October 2023 affected a large number of individuals. Additionally, the Delhi flood, also known as the 'Flood Displacement Hotspot' overflowed with heavy rains, resulting in flood destruction.

## New Delhi

*Banks of Yamuna river, including Shahadra, Wazirabad, Alipur and Nangloi- Najafgarh regions.*

**The country experienced extreme weather events on 235 out of 273 days or a little over 86% of the days from January 1 to September 30, 2023. These events claimed 2,923 human lives, affected 1.84 million hectares of crop area, damaged 80,563 houses and killed over 92,519 animals.**

*Source: India 2023: An assessment of extreme weather events, Centre for Science and Environment- Down to Earth | Analysis based on data released by the Indian Meteorological Department, Pune, Disaster Management Division under the Union Ministry of Home Affairs and media reports*

## Percentage Distributions

**52%**

Floods

**31%**

Cyclones

**10%**

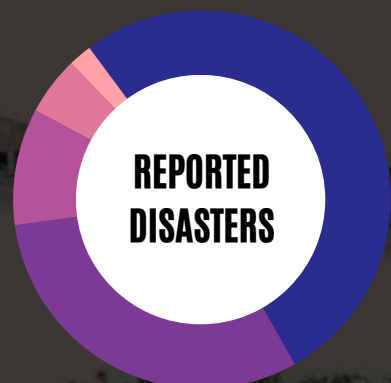
Landslides

**5%**

Earthquakes

**2%**

Heavy Rainfall



## INDIA

3rd most  
disaster-prone  
Country

### Himachal Pradesh

Mandi, Shimla, Manali and Kullu

### Sikkim

Mangan, Gangtok, Pakyong  
and Namchi districts

### West bengal

Bapatala and other parts of AP

### Tamil Nadu

Norther eastern part of  
Tamil Nadu and South  
eastern Andhra Pradesh

Over  
**2,923**

people lost their  
lives due to  
disasters.

Over  
**2000**

million hectares  
of crops  
damaged



# Tamil Nadu Flood (Cyclone Michaung)

## LOCATION

Norther eastern part of Tamil Nadu and South eastern Andhra Pradesh was affected by the unprecedented rainfall in the first week of December 2023. Thoothukudi, Kovilpatti, Thiruchendur, Virudhanagar, Tirunelveli, Chennai and Palayamkottai

## IMPACT OF CYCLONE

31 lives lost, 12,000-15,000 INR economic loss in terms of infrastructure damage, public property destruction, 18,000 individuals displaced to relief camps, 7,000 houses damaged, 2.24 lakhs acres of agriculture and 1.07 lakh cattle ravaged.

**2680 families were distributed with ration kits, affecting 10,000 individuals**

**54**

Villages covered

**30,000+**

Beneficiaries impacted

**310**

Volunteers engaged

**1860**

Volunteering hours

## SEWA'S RESPONSE

1. **Ration Kit Distribution Drive** was initiated in various villages in order to tackle the nutritional needs of the affected. The ration kit included essential items like rice, flour, pulses, cooking oil, salt, spices, sugar, tea, milk powder etc. These ration packages were prepared with the aim of meeting the minimum daily calorie intake, protein, vitamins and other nutritional requirements and a balanced diet for the families in the difficult time. 2680 families were distributed with ration kits, affecting 10,000 individuals

2. Disaster Relief Kit distribution- 3,200 Relief Kit Distribution were distributed to address additional needs such as clothing, toiletries, and other basic health and sanitation requirements of around 10,000 affected individuals.

3. School Kit Distribution- The school kits consisted of a variety of stationery and school items like school bag, notebooks, pencil box, drawing book, crayons, water bottle, lunch box etc. to ensure continuation of quality education for 1000 children.

4. 50 stitching machines distributed in coimbatore to promote



# Delhi Flood



**4,302**

beneficiaries  
outreached



**70**

Volunteers  
engaged



**420**

Volunteer hours

## LOCATION

Delhi flood occurred at the west banks of Yamuna river, including Shahadra, Wazirabad, Alipur and Nangloi- Najafgarh regions.



## IMPACT OF FLOOD

Around 4,000+ families residing in the banks of river were rescued and shifted. 16,000 people were homeless and had no access to basic necessities.



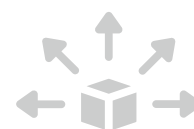
## CAUSE

The flow of Yamuna is largely disrupted by heavy flow from the Tejawala catchment. In the event of heavy rain in the catchment area, excess water was released from Tajewala, which in turn helped in arising the Yamuna level in Delhi, resulting in flood.



## SEWA WORK

100+ hygiene essential kits were distributed, which included soap, toothbrushes and toothpaste. 500+ water bottles & 500+ packets of dry ration kits were distributed.





# Himachal Flood

## LOCATION



## CAUSE

Following torrential rainfall since the start of the monsoon in early June, the northern states of India were afflicted with cloud bursts, flash floods, landslides, lightning etc.

## IMPACT OF DISASTER

350 lives lost, 10,000 cr estimated economic damage, approx 1 lakh houses damaged

## OUR RESPONSE

1. 19 Medical Health Check-up Camps at 3 identified locations- 1077 patients reached with 429 males, 488 females, 158 children. Services provided in health camps:

- Expert Doctor consultation and diagnosis.
- Distribution of Basic Medicines for the common ailments.
- Blood pressure, Haemoglobin and Diabetes check up.
- Counselling for the trauma.
- Preventive Healthcare Information dissemination to individuals

2. Ration kit distribution- 2,000 kits were distributed which included essential items like rice, flour, pulses, cooking oil, salt, spices, sugar, tea, milk powder etc. The ration package was prepared towards meeting the minimum daily calorie intake, protein, vitamins and other nutritional requirements.



**11,231**  
Beneficiaries



**70**  
Volunteers engaged



**420**  
Volunteering hours





# Sikkim Flood

## LOCATION

Mangan, gangtok, Pakyong and Namchi districts in Sikkim and Kalimpong, Darjeeling in West Bengal.

## IMPACT OF DISASTER

277 homes destroyed, 50+ families displaced and communities in distress, 11 bridges collapsed.

## SEWA'S RESPONSE:

- Distribution of dry ration, hygiene and sanitation kits, medicine and other essential items were distributed to 50+ families in the affected region. Household Items: Rice Bag, Dal Bag, Oil, Gas Stove, Gas Cylinder & Rice Cooker, Emergency Items: First Aid, Sanitary Pads, & Blanket
- 30 families were supported with tin sheets for house rebuilding purpose
- 160 School Kits distributed



# 1000+

beneficiaries  
outreached



# 500+

Districts covered



# 180

Hours dedicated  
by volunteers

# Andhra Pradesh Flood

## CAUSE

Cyclone Michaung intensified in the first week of December and made landfall on the beach town of Bapatla, Andhra Pradesh on December 5th, 2023, causing torrential rainfall and floods resulting towards large-scale devastation.

## IMPACT

lives of 40,000 people impacted, 5 lives lost, 10,000 people moved to 125 relief camps

## SEWA'S RESPONSE

Ration Kit Distribution- 800 ration kits were distributed in 14 villages of Andhra Pradesh supporting 4,000 individuals

**120**

Volunteer hours  
dedicated

**14**

Villages covered

**4,000+**

Beneficiaries

**20**

Volunteers  
engaged

## LOCATION

Bapatla, Andhra Pradesh



## Joshimath Relief

### IMPACT

800 houses with cracks, 1600+ residents forced to evacuate and relocate to temporary shelters





### SEWA'S RESPONSE

1. 20 medical camps were set up in 4 months, providing assistance to 914 individuals
2. Provide last-mile delivery of specialised healthcare services via Sewa Arogyam (Mobile Health Van)
3. Mobilisation, formation and institutionalisation of adolescent health groups consisting of 224 girls
4. Mental health and trauma care counselling to 200 families



**3076**  
Beneficiaries



## Balasore Train Accident

### LOCATION

Balasore, Odisha

### CAUSE

Triple train collision, further leading to derailment

### IMPACT

278 precious lives lost, more than 1175 passengers injured

### SEWA'S RESPONSE

A research study was conducted to understand the need of the hour. 15 families were surveyed to support them during the times of crisis. The affected families were provided with emotional counselling to deal and cope up from the situation.



## Cyclone Biparjoy: Kutch Disaster Relief

### LOCATION

Kutch and Rajkot districts were affected the most due to Cyclone Biparjoy



**IMPACT**

3 lives were lost, 1.30 lakh hectares of crops damaged, loss of agricultural and horticulture crops.

**SEWA'S RESPONSE**

1. Ration kits distribution- 250 ration kits distributed with the amount of ration that is supposed to support a family of 4 people for 3-4 weeks, supporting 1,000 individuals
2. School Education Kits- 250 school kits were distributed to children in need. The kit included a school bag, notebook, pencil box, drawing book, crayons, water bottle, lunch box etc.
3. Skill development and training- Training of 100+ individuals in computer training, along with a computer centre setup at Vanki village, Kutch district.



**1700+**  
Beneficiaries



## Manipur Relief Activity

**LOCATION**

State of Manipur

**IMPACT**

160 lives lost, 60,000 people flee and abandoned their houses

**IMPACT**

- Relief kit distribution- This kit consisted of items of different types, like infrastructure and household related items, clothes and footwear, health and hygiene care items, recreational games and support items, ration and other food items. 2438 individuals were provided with these kits in 17 relief camps which was run by the government conducted across 4 districts of Manipur



- Support through micro enterprise development- various types of micro enterprise training were given to the target population in order to empower them to lead a successful and happy life in future. candle making, agarbatti making, body soap making, laundry soap bar and liquid dish bar. 164 individuals were supported by this micro enterprise intervention. Relief camp was provided by gov, however no income generation activity was there, thus started this activity
- Support through medicines and consumable supplies to government hospitals, thus supporting 6,000+ individuals



**16,408**  
Beneficiaries



**4**  
Districts covered

## Tapovan Rehabilitation

### LOCATION

Tapovan, Chamoli, Uttarakhand

### CAUSE

Aftermath of Glacier burst in 2021 that affected many lives in tapovan and forced many families to reestablish their homes.

### IMPACT

83 lives lost, over 200 people missing and thousands forced to flee out of their homes.



### SEWA'S RESPONSE

Laadli Mahotsav- An event was organised by Sewa International to promote and empower at the grassroots level .The event observed a participation of 800 individuals from the neighbouring districts.

Multispeciality camps- A 6-day multi-speciality camp was organised, and provided service to 1,336 individuals. 103 patients with severe diseases were referred to other hospitals, in order to provide them with better care (highlight this line)



**150**  
Volunteer hours dedicated



**30**  
Villages covered



**4,000+**  
Beneficiaries



**25**  
Volunteers engaged





# DISASTER PREPAREDNESS & RESPONSE

Disaster Preparedness plays a crucial role in not only safeguarding lives of many people, but also helps equipping the individuals to aid other individuals during the times of emergency. Sewa International has been dedicated towards providing relief to disaster affected areas. However, with time evolving, a crucial paradigm shift has emerged. This shift identifies the need of transitioning from post-disaster relief efforts to proactive pre-preparation of individuals residing in disaster prone areas. This phenomenon has demonstrated its effectiveness in empowering communities to anticipate and mitigate the impact of potential disasters. By prioritising preparedness, lives are saved, after-disaster costs are mitigated and communities are empowered to fight with potential disasters, thus circumventing the aftermath and devastating consequences of such events.

Releasing its need, Sewa International has introduced the project SCODE to promote disaster preparedness at field.

## SCODE

### School Crisis Orientation & Disaster Education

This project focuses towards strengthening community members, particularly school students by ensuring their effective and coordinated response in times of crisis. Enhancing the school based awareness about disasters in order to inculcate the values of preparedness and resilience among children and communities, further creating a safe learning environment using non-structural mitigation measures.



**Empowering Students for  
Safety and Resilience**



This year Mission SCODE was launched in Haridwar, Uttarakhand, along with 2 training sessions conducted in Pokhri and Dehradun districts of Uttarakhand with participation of 40 and 330 individuals from school respectively.

## Key Features



Leadership & Personality Development



Activity Based Learning



Practical Demonstrations



Real World Simulations



Understanding Risk, Vulnerabilities and Disasters



Rescue Methods



First Aid



CPR



Emergency Numbers and Disaster Management Institutions



Fire Safety



Road Safety

## Topics Covered







# 2

## Livelihood & Skill Development

Sewa International's empowerment ideology does not follow a welfare approach; rather, it embraces a need-based strategy that generates livelihood opportunities tailored to individual needs. These opportunities, emerging from the community, for the community, and by the community, are designed to help people sustain their lives, by indulging in varied livelihood options.

The core philosophy of Sewa International is to empower communities through guidance and support, enabling them to become self-sufficient with minimal intervention. Most of Sewa International's initiatives focus on women empowerment and creating livelihoods from locally available resources and livestock.



## *Livelihood at a Glance*

**1,62,255+**

Individuals Supported

**4,395+ kg**

Crops sold by  
Community Farmers

**730**

SHGs Formed

**8,440+**

SHGs women member

**340**

Villages covered

**850+**

Kilograms of  
Vegetable produced

**4,388+**

Litres of milk  
produced

**4,395+ kg**

Crops sold by  
Community Farmers

**20**

Community  
Farms formed

**16,425**

Job Placements





# *I. Empowering Women*

---

Growing Futures:  
Livelihoods for Change

## **I. Women Empowerment**

Women are the pillars of society. Empowerment of women has been conceptualised as a multifaceted process aimed at increasing women's agency, autonomy and participation in decision making process across various spheres of life. Empowerment, as the word suggests, entails fostering a supportive environment that promotes equality in society, challenges stereotypes and harmful norms and promotes leadership and rights among the weaker section of society.

The issue of women empowerment is now considered a global phenomenon. The concept of empowerment gathered attention since the origin of the United Nations Organisation. The year 2001 is declared as the 'Women's Empowerment Year' or the 'International Year for Women's Empowerment'

Empowerment of women is not only crucial for development of one gender, rather plays a crucial role in the overall development of the nation. Considering the situation, Sewa International plays its crucial part in empowering the women of the nation by engaging them in various activities and developing their skills so as to grab them a job. Sewa International's ideology revolves around the Right-based approach, in which individuals are empowered considering it to be their fundamental right. This approach sees the citizens of India as individuals who have the right to be developed as part of the nation. Following the same, the organisation has developed the conceptual framework, which is used for women empowerment as well as development of citizens.





Sewa International started by indulging in the welfare approach by providing people (or specifically women) with the basic requirement, without soliciting their preference. For example, providing women with 3 meals a day in order to support them during poverty. Here, welfare has been provided to the needy.. Moving forward from this approach, the organisation recognised the value of need-based approach. Here, target population's needs are identified first, and interventions are tailored accordingly. To illustrate this concept, consider a scenario where women are consulted about their needs and preferences. Subsequently, they are provided with the requested assistance or resources.

Moving ahead, the organisation embraced an empowerment approach. Instead of directly offering benefits, target population is indirectly empowered through training, leading to employment opportunities and self sufficiency. For example, women receive skill development training in arts and crafts, enabling them to secure jobs. In alignment with the contemporary emphasis on individual rights, the organisation has adopted a right- based approach. It focuses on equipping individuals with skills that empower them, thereby contributing to the nation's overall development. Considering the whole conceptual framework of various approaches adopted by organisation, Sewa International has introduced various projects uplifting women and supporting them to learn in the long run.

These projects are specifically designed to empower women and provide them the required support for them to flourish in the real world.



## Welfare Approaches

This approach or method is a strategy to provide direct assistance or support to individuals or communities in need, typically without long term sustainability or empowerment. It often involves providing the basic necessities such as food, clothing and shelter assistance to underprivileged, which aims to address the immediate needs rather focusing on the long term impact. Need- based Approach- This approach focuses on identification of needs first, then providing assistance as per requirement. It focuses on understanding, assessing and targeting the population, while tailoring support according to the requirement. This approach provides the flexibility to customise the initiative and enhance responsiveness, customization and sense of empowerment in individuals.





## Need-based Approaches

This approach focuses on identification of needs first, then providing assistance as per requirement. It focuses on understanding, assessing and targeting the population, while tailoring support according to the requirement. This approach provides the flexibility to customise the initiative and enhance responsiveness, customization and sense of empowerment in individuals.

## Empowerment Approaches

The approach focuses on utilising strength, resilience and resources to maximise the development process. In this approach, the focus is on mobilising the underprivileged for self- help efforts, rather than serving them with the welfare approach.

## Rights-based Approaches

This type of approach is established on the principles of basic human rights. Via this approach, individuals are helped by restoring their dignity and claiming their rights as human beings and citizens. This innovative approach has been embraced and adopted by various organisations, as this method is dynamic and proactive, poised to bring out overall development of the nation.





## Women Entrepreneurship Development (Sewa Mahila Jyothi)



This initiative by Sewa International works towards empowering the women, coming from rural settings. Under this initiative, 30 women are provided with training in design, entrepreneurship and marketing in order to promote the sense of empowerment in our target population. With this initiative, we aim to elevate income, act as community resource, ensure updated equipment provision and enhance market accessibility for women entrepreneurs.

After production of goods, these women are provided with the opportunity to set up their own stalls to sell their products in the market. This exposure is essential for them to understand market dynamics and expand their business acumen.

*During himachal flood 2023,*

# 2500+

*Relief Kit Bags distributed were  
stitched and produced by*

**Sewa Mahila Jyothi women only.**

*It was a moment of pride for the  
women, their family and Sewa  
International as well.*



### 7 Stitching Centers

1. Sewa Mahila Jyoti Kendra, Sirodhan Village, Hapur, Uttar Pradesh
2. Sewa Mahila Jyoti Kendra, Sadarpur Village, Noida Sector-45, Uttar Pradesh
3. Sewa Mahila Jyoti Kendra, Pokhri, Uttarakhand
4. Sewa Mahila Jyoti Kendra, Tapovan, Uttarakhand
5. Sewa Mahila Jyoti Kendra, Chandrapuri, Uttarakhand
6. Sewa Mahila Jyoti Kendra, Bhanaj, Uttarakhand
7. Sewa Mahila Jyoti Kendra, Simli, Uttarakhand



## 7

Stitching Centers



## 150

Women associated





## Sanitation, Health and Empowerment (Covid Affected Families)

This project focuses on enhancing micro-enterprises and offering marketable skill development training to women from COVID- affected families. The training encompasses a variety of skills, including tailoring, basic computer skills, tally & accounting, beauty & wellness, and makeup artist or beautician courses. Furthermore, through the SHE-CAF program, Sewa International extends support by offering specialised regional skill development training such as kasuti and nakshi kantha embroidery, Kaudi blankets, Kalamkari paintings, leather puppetry and further support to weavers. The program also aids in establishing micro-enterprises and provides livestock to tribal women, empowering them to achieve economic independence.

### Journey of Hope and Happiness

*Jasmine, a transgender woman from Hyderabad, shares her journey of connecting with Sewa International and SITAL Parivar, who supported her in establishing her own small hotel. She expressed, "Being transgender is not easy. No landlord was willing to rent me a place to start my business, and if anyone agreed, they would double the rent. But when Sewa International stepped in to help me, I felt a glimmer of hope. I would like to thank Sewa International for their incredible support."*



**16,540+**  
Beneficiaries impacted



**4,135+**  
Women supported



**65**  
Villages covered



## Skill Development of Farmers for Alternative Livelihood



Under this project, empowerment of 100 individuals across various SHG units for masala papad production through advanced training, input support, and market linkages, which further fosters increased income, self-employment and better community job opportunities. This project aims towards empowering 10 SHG units by providing them with essential skill development training.



Priti Sutar, Alternate Livelihood Project member

Adarsh Gat, Beed

"I couldn't believe my eyes when I saw those machines humming with life, right here in our village. It was like a dream come true! We never imagined we'd have such opportunities in our small community. But thanks to Sewa International, everything changed for us that day. I felt a surge of excitement and pride knowing that I was going to be a part of something big – something that could change our lives forever. The training sessions were so empowering; they made us feel capable and confident. And when we received our first bulk orders, it was like a validation of all our hard work and dedication. I can't thank Sewa International enough for believing in us and giving us this chance to shine. With these machines, we're not just making papads and masalas; we're making our dreams a reality."

### 5 types of machines have been setup to support the farmers:



Papad Machine



Bhakri Unit



Masala Machine



Oil Extraction Unit



# 3,60,000

Beneficiaries collection contribution



# 40

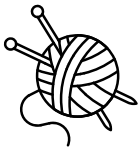
Women Supported





## ALIGN-Alternative Livelihoods & Income Generation Initiative

Most communities of Uttarakhand rely on agriculture for their livelihood, however it is proved not to be sustainable at the ground level. Thus, demand for alternative livelihood arises. Local communities of Uttarakhand are provided with training and capacity building workshops which help them to generate better alternate livelihood options in knitting, weaving and ringal techniques. In order to excel better, various types of training are provided which includes in-depth training, financial training, market value training and product manufacturing training. Moreover, credit linkage has also been an integral part of this initiative, promoting financial independence of women.



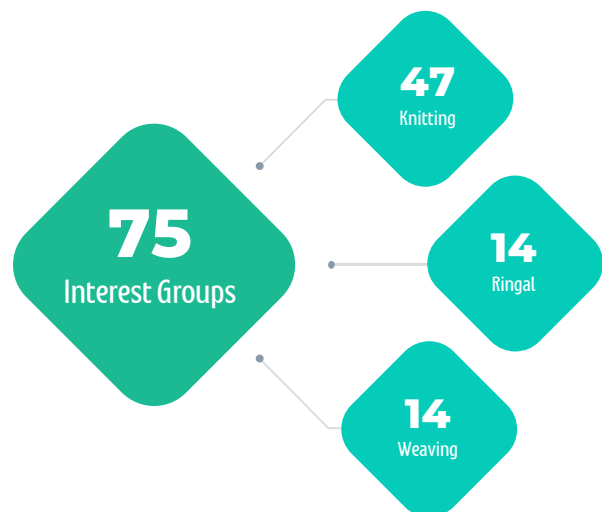
**750**  
Artisans

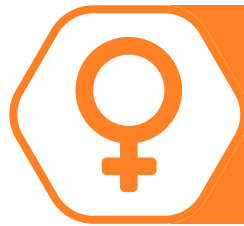


**54**  
Villages



**6,04,000**  
Credit linkage





## Women Empowerment and Entrepreneurship Program

Understanding the importance of digital literacy, Sewa International initiated this project to impart the knowledge about digital literacy to women. Digital literacy, financial skills and entrepreneurship skills further help the women towards increased income, economic independence and gained confidence in women.



*“The exposure visit to Gandhi Darshan and Khadi India was a dream come true for me. As a villager, such opportunities are rare, and I felt overwhelmed with excitement. Walking through the halls of these renowned institutions and hearing from industry experts filled me with inspiration and a newfound sense of determination. The support from the Sewa International team made it even more special, and I returned home with a renewed sense of purpose, ready to turn my entrepreneurial dreams into reality.”*

-Sushama, Stitching Centre,  
Sadarpur



# 8,800

Beneficiaries outreached



# 2,200

Women Supported



# 40

Hours of Master  
Training



# 80%

of women target population use

online platforms

to sell their products and  
further grow their businesses



## Sewa Srujan- Self Help Group



This initiative focuses on building the capacity of individuals by supporting 463 Self Help Groups established and empowered by Sewa International. These SHGs identify local market needs, subsequently design & manufacture products to meet those demands. This approach not only fulfils market needs but also fosters the growth and success of businesses run by women in these SHGs.

**250**

Unique villages targeted

**5086**

Women Impacted

**20,344**

Beneficiaries outreached

**8,250+**

Total SHG Members

**550+**

SHGs formed

### Key products manufactured by SHGs

Made from locally grown fruits in the region.

*Jellies**Jam**Pickles*

# II. Agriculture & Green Jobs

## Harvesting Opportunities:

### Sustainable Careers in Agriculture and Environmental

A fundamental paradigm shift is required in the global agricultural sector to respond effectively to the environmental distress. In order to promote a healthy and sustainable environment, the concept of Green Jobs was introduced by the conjoint efforts by United National Environment Programme (UNEP) and International Labour Organisation (ILO). Green jobs initiative was introduced in 2008 by the combined efforts of various organisation, working towards the same goal of sustaining the environment and restoring ecosystem. It is a concept of providing decent jobs to individuals that contribute towards preserving or restoring the environment. Sewa International serves its part to the humanity by working in providing agriculture related education to farmers and thus engaging them in Green jobs, which would not only help them to secure their future by earning money, but would also support the nature by sustaining the environment.





## Sewa Krishi: Upskilling Honey Farmers



**360**  
Beneficiaries impacted

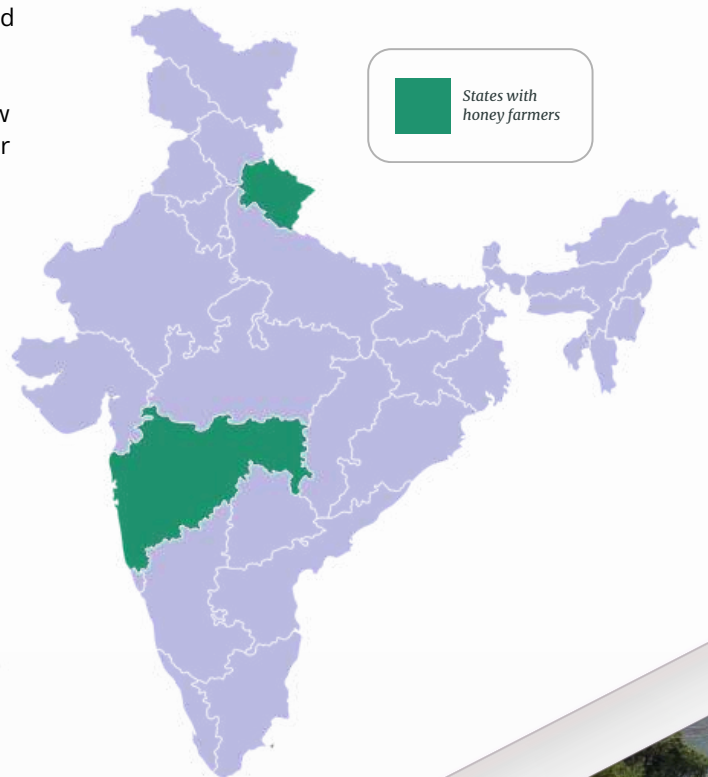


**90**  
Honey farmers supported

This project empowers our target population through comprehensive training in advanced beekeeping techniques, with the aim of enhancing both production yields and income generation. Currently operating in the states of Uttarakhand and Maharashtra, the initiative promotes sustainable beekeeping practices by providing access to updated information and cutting-edge technology. To facilitate effective training delivery, the project has formulated 5 groups comprising 50 farmers each, thereby ensuring high quality instruction and support to all the beneficiaries. Based on field survey insights, new farmers were selected and trained according to their interests, enabling them to generate sustainable income.



**90** Liters of Honey  
Production  
(yearly)



## Seed Bank Development



The main aim of this project is to create and support the concept of 'Seed Sovereignty'. With the help of this concept, the indigenous traditional knowledge of preserving the local seeds is conserved and restored for the upcoming generation to get hands-on unique and traditional knowledge.

In this project, two types of hut (mud hut and tin hut) are constructed in a village where seeds are stored in a safe environment. This natural mud hut is placed in the centre of 3 villages, making this initiative accessible to neighbouring villages. Via this initiative, the population can buy high yielding seeds at any time of the year.



 *Sinau, Chamoli*

 *Dewer, Chamoli*

 *Khal, Chamoli*



### Types of Seeds

pea, coriander, cabbage, brinjal, barley,  
beans, okra, tomato, chilli, radish, cucumber, potato, and capsicum

Onion, garlic, and zucchini,  
Kauni, Manduwa, Red paddy and jhangora.





## HARELA- Himalayan Agriculture Rejuvenation and Enhancement of Livelihood for Agri-preners



HARELA functions as a Demonstration or Model Farm, providing farmers with hands-on exposure to a variety of agricultural techniques, focusing on crucial aspects of organic farming. Sewa International prioritises the enhancement of farmers' capabilities through training and input assistance, following the principle of '3Ts'- Training, Tools and Technologies, in order to provide indispensable support to farmers. In addition, this type of farming components include livestock (such as dairy and goat farming) and crops (such as vegetable and horticultural crops), to achieve synergistic agricultural outcomes.



**800**  
Glasses distributed



**23**  
Villages outreached

### Project Activities

Asset and Infrastructure;  
Demonstration Farm (One farm in each district)



Farm Development



Farm Management



Tools & Equipment



Training & Capacity Building



Marketing Support



Program Management & Monitoring



Chamoli



Rudraprayag





## Community Farming

This initiative focuses towards empowering small and marginal farmers in rural areas through collaborative efforts, leveraging underutilised lands to foster sustainable livelihoods. Furthermore, they receive support through training programs and access to cutting-edge technologies, enabling them to enhance their agricultural practices and productivity.

Land pooling mechanism, creating fraternity between people where people come together and farm in a more sustainable way. People coming together to revive agriculture



**212**  
Beneficiaries



**20**  
Community Farms



**4395**  
Kgs of crops &  
**2326**  
Bunches of crop sold

### District-wise farm & farmers distribution

Chamoli District		Rudraprayag District	
Pokhri Cluster	Urgam Cluster	Chandranagar Cluster	Chandrapuri Cluster
06 Farms	06 Farms	05 Farms	03 Farms
55 Farmers	35 Farmers	27 Farmers	15 Farmers





## Upskilling Farmers for Integrated Livestock Development (Dairy)



This project is dedicated to empowering 40 farmers in Chamoli, Uttarakhand. Through comprehensive training, orientation, and ongoing technical supervision and handholding support, these farmers gain valuable skills, knowledge, and the confidence to independently manage their livestock farming ventures. The empowerment of these local farmers leads to self-sufficiency and sustainable agricultural practices.

### Project Locations



Osmanabad, Maharashtra



Chamoli, Uttarakhand

Beneficiary contribution as shareholding capital in FPC  
**90,000 Rs.**

"Oh, it was a day I won't forget, when the Sewa International team came knocking on my door. I remember the warmth in their smiles, as if they were old friends coming to visit. They didn't just talk about their project; they listened to me, really listened, like my words mattered. And when they explained how their project could help us farmers, I felt a glimmer of hope spark inside me. You see, life as a farmer in our village isn't easy. Every day is a struggle to make ends meet, to put food on the table for my family. But when the Sewa team sat with me in my humble home, sharing stories and chai, it felt like a weight had been lifted off my shoulders. For the first time in a long while, I felt seen, heard, and understood. Their visit wasn't just about bringing aid; it was about building a connection, a bond of trust and solidarity. And as they left, promising to return with help and support, I couldn't help but feel a sense of gratitude wash over me. Because at that moment, I knew I wasn't alone on this journey. With Sewa International by my side, I felt empowered, ready to face whatever challenges lay ahead."

**-PINKY DEVI, CHAMOLI**



**4,388**

No of litres of milk produced (in Kgs)



**210,900**

Income generated by selling milk (in Rs)



**15**

Cows distributed



**11**

Calves



## Goat Rearing Initiative: Integrated Livelihood Development

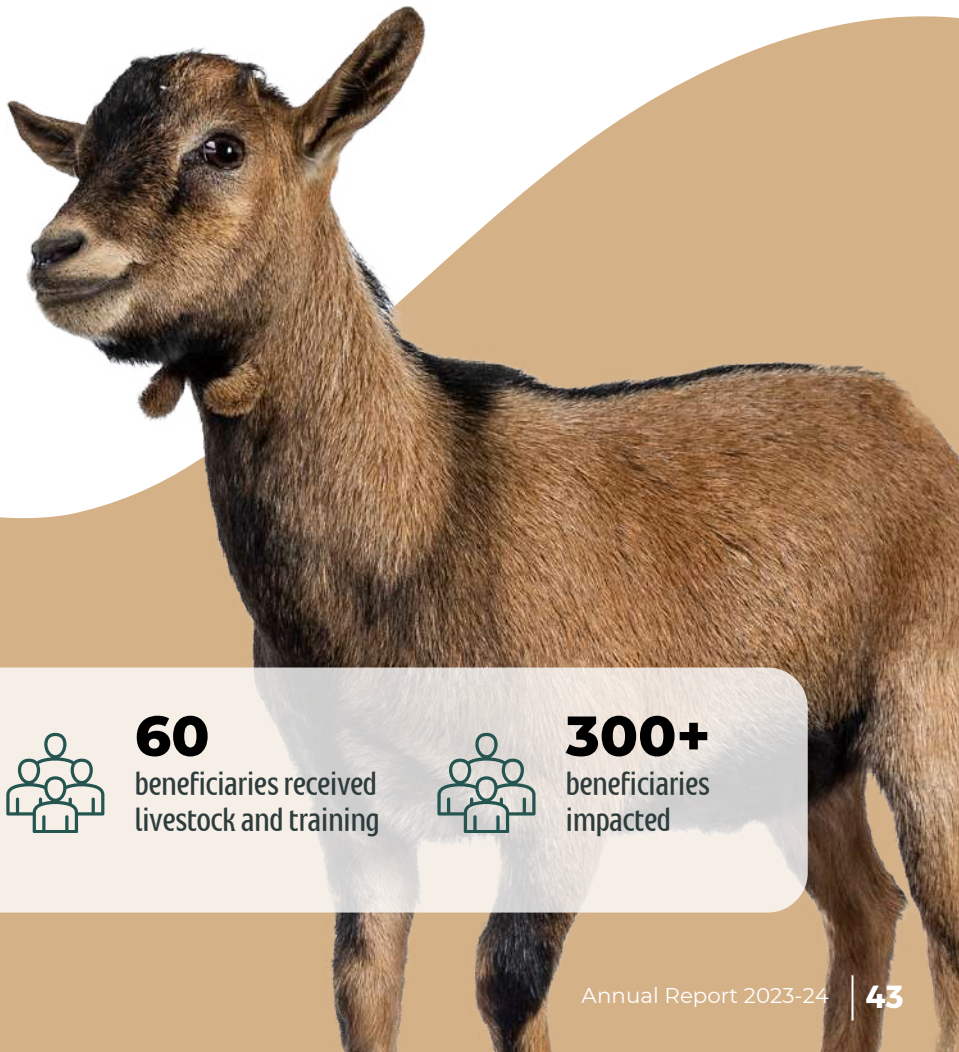
### Topics Covered

- Basics of goat rearing
- Cattle structure in captive goat rearing
- Disease and vaccination
- Goat feed
- Marketing of goats

Through this program, Sewa International intended to uplift and diversify the livelihoods of 200 individuals by boosting income generation through agriculture and providing an additional income source for 60 individuals through livestock rearing.

Sewa International aims to break the cycle of poverty by equipping these target population with the necessary skills, resources and support system to bolster their economic well-being and ensure long-term financial stability.

This project's aspiration is to foster a sense of self-reliance, community solidarity, and resilience, paving the way for a brighter and more prosperous tomorrow. The project not only augmented income but also strengthened livelihoods, providing families with a sustainable source of income and reducing their dependency on a single source.



**140**  
received  
supplements  
and training



**60**  
beneficiaries received  
livestock and training



**300+**  
beneficiaries  
impacted





"I had reared goats. My mother and grandmother also used to take care of goats. But only after this training that I understood that there are this much interesting facts about goat rearing which can ensure high production and yield. Initially, I used to follow traditional methods passed down through generations. However, attending the training session organized by Sewa International opened my eyes to modern techniques and best practices in goat rearing. The expertise shared by the trainers from KVK Tuljapur was invaluable. I learned about the importance of proper nutrition, disease prevention, and even marketing strategies for selling goats. This newfound knowledge has not only enhanced my understanding but has also boosted my confidence in managing my goat farm effectively. I am now better equipped to provide quality care to my goats, ensuring their well-being and maximizing productivity. I am truly grateful to Sewa International for organizing such a beneficial training program, which has transformed the way I approach goat rearing."

**-Archana Shivaji Bhosle,  
Tugaon, Osmanabad**





### III. Resilient Communities & Sustainable Living

#### **Sustainable Paths, Resilient Communities: Shaping Tomorrow Together by enhanced Skill Development**

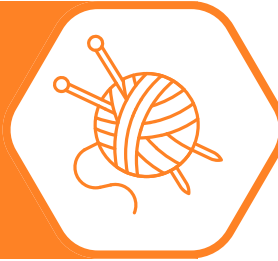
The idea of a resilient community revolves around generating a strong society that can shape a brighter future together. It is believed that social development is the cornerstone for building stronger communities to thrive on their own. This phenomenon could be achieved by providing skill development training to individuals and supporting them to contribute towards the overall development of the society.

Skill development is the art of identifying, enhancing and nurturing an individual's abilities and skills. This identification of an individual's interest helps them to grow and develop specialisation in their own training, and thus earning a livelihood out of it. This process is crucial for personal growth, career development and change adaptation as per the demand of the ever- changing society.

Believing in the process of community development, Sewa International has also introduced various skill development based initiatives, that are individual centric and focuses on nurturing individual interest, thus converting it into their skill. The following mentioned are programs that are supported by Sewa International to enhance individual development.

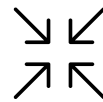


## Sustainable Livelihood through Handicraft Weaving: Wool Craft for Bhotiya Tribe

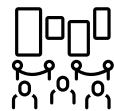


The Bhotiya tribe, renowned for their inherent weaving skills, are given the opportunity to preserve their rich culture and traditions. Previously, their craft was at risk of being lost due to outdated design and techniques. After considering the situation, Sewa International launched this initiative which equips this tribe with modern knowledge and provides a platform to continue their legacy, ensuring the survival and growth of their traditional craftsmanship.

### Market Linkage Via:



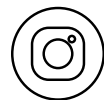
Diorama  
Establishment



Craft  
Exhibitions



Workshops



Instagram Page  
for Woolcraft  
products



**308**

Tribal people supported



**4**

Interest Group formed



**153**

Products Developed



**4,13,990**

INR Worth Income Generated



**1 Unit**

Women Led Wool Craft  
Production Centre at Raini  
Village, Joshimath





## Micro Entrepreneurs and Skill Development

The project cultivates micro-entrepreneurs among 50 underprivileged individuals through comprehensive training, group information, and provision of equipment support. This initiative results in increased income levels, a sense of empowerment and an improved quality of life for the target population. Moreover, it enhances production efficiency by supplying updated information and modern equipment, ensuring long-term success. The initiative provided exposure visit to Khadi India and Gandhi Darshan. Participants gained first-hand knowledge and experience while witnessing real-life situations. Additionally, this exposure visit broadened participants' horizons, helping them explore new career paths, industries, and areas of interest.

**58**

Hours of Micro-  
entrepreneurship &  
Refresher training

**200**

Beneficiaries Outreached

**5**

Trainings

**50**

Micro Entrepreneurs  
supported (18 Males,  
32 Females)

### Number of Beneficiaries



**17-** Cosmetics and  
Beautician Training



**19-** Tailoring



**3-** Hair Salon



**3-** Tea Stall



**3-** Electronics



**5-** General Store

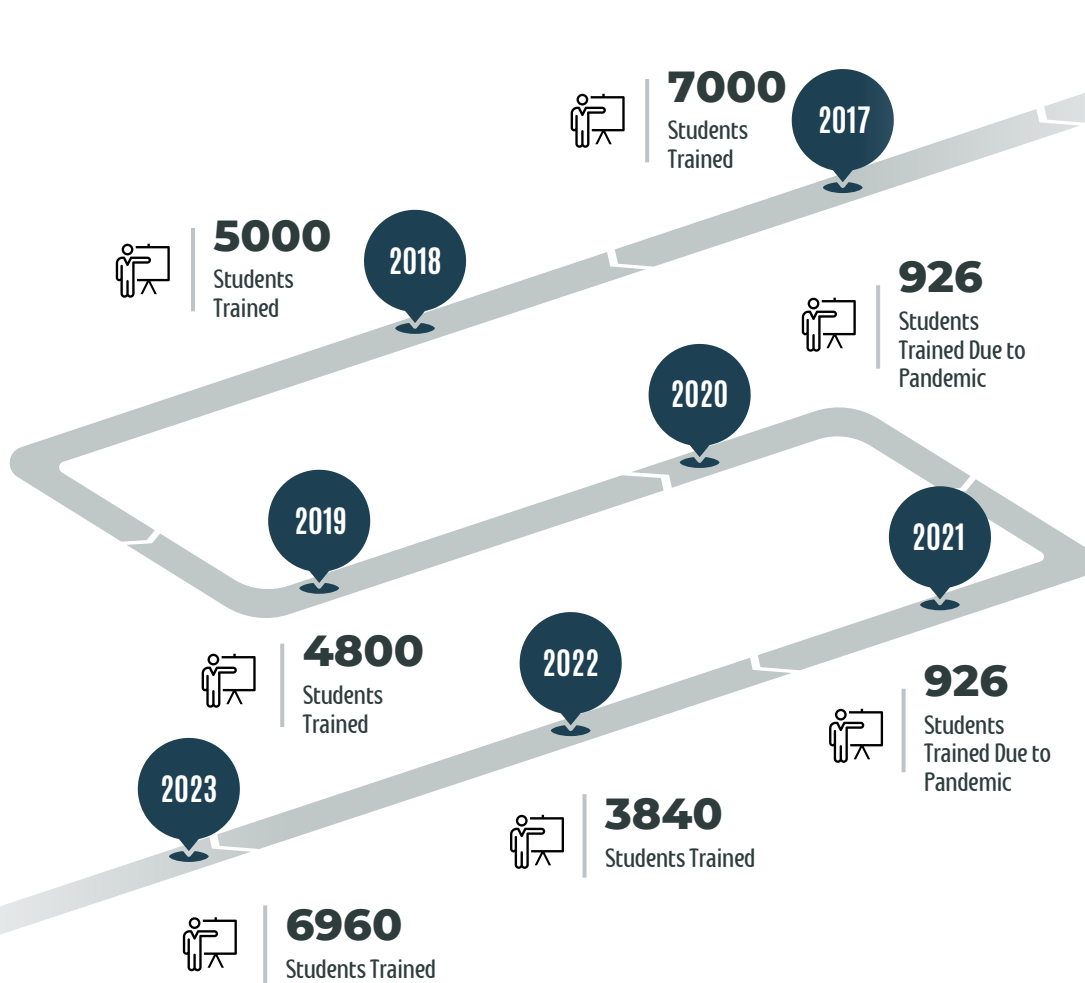




## Pradhan Mantri Kaushal Kendra



In collaboration with the Government of India, Sewa International works towards providing skills development training to empower communities into becoming self-sustaining. Through the establishment and support of Pradhan Mantri Kaushal Kendra centres across the states of Uttarakhand, Sewa International ensures these quality institutions meet the aspirants of trainees, offering competency based skill development programs and support throughout placements assistance to the target population.





**29,452**

Total students Registered till 2024



**20,616**

students completed training and certified



**12,370**

students Placement



Telangana



Nagarkurnul

Uttarakhand



Sewa International



Foresight Edutech Pvt Ltd

## Rozgar Mela

Mega Job Fair was organized at Uttarakhand and Telangana in order to provide the employment to the students enrolled at our skill development centers.

### Job Roles

- ✓ Quality Seed Grower
- ✓ General Duty Assistant
- ✓ Self Employed Tailor
- ✓ Domestic Data Entry Operator
- ✓ Home Health Aide
- ✓ Mobile Phone Repair Tech.
- ✓ Front office Associate
- ✓ Digital marketing and networking training
- ✓ Field Tech. Other Home Appliances
- ✓ Distributor Salesman
- ✓ In-Store Promoter
- ✓ Jam jelly and ketchup processing Technician
- ✓ Travel Consultant
- ✓ Organic Grower



**1,01,745+**

Students Participants



**131**

Companies Participated



**16,425+**

Job Placements done







## Sewa Mela

Sewa Mela is organized every year by Sewa International for PMKK students. This mela serves as a platform for students to showcase their artistic talents and crafts while simultaneously selling their creations, thereby fostering entrepreneurship skills and self-empowerment. We provide them the platform for marketing the products of these young entrepreneurs. The Sewa Mela is organized for 15 days during the festival season of Dusshera and Diwali.





## Sewa International Design & Development Centre- SIDDC



Sewa International Design & Development Centre (SIDDC) was inaugurated at Jiyapar Tal, Nakhatrana, Kutch District, Gujarat. This centre is providing regular employment to 25 tailors and indirect employment to around 600 women involved in Embroidery/Bandhani work in 16 villages. During the last five years, Sewa International has trained more than 2000 women artisans under the Technical Training Program (TTP). The artisans have since been associated with the organization and doing quality bandhani (Tie & Die) and embroidery work. The organization also trained 150 women master tailors.

**Sewa Kala Srushti Private Limited** plays an important role in providing a market for handicrafts.



### 8,85,479

Rupees Income Generated



### 120

Beneficiaries Benefitted

This is a crucial part of the initiative to promote the finished goods prepared by the women. This is done through the involvement of experts and by taking the help of government platforms. Exhibitions at the state and National levels are of priority to display the products and to promote the same. the handicrafts are







## Sustainable Institution Building and Entrepreneurship Development

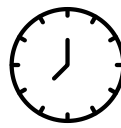
Under this project, 400+ individuals are meticulously selected and trained in micro-enterprise management and operations. Additionally, 40 Self Help Groups (SHG) receive capacity building training, with 5 federations being registered for the same. This initiative aims to enhance self-employment opportunities within the community, increase income, create enterprise-driven jobs, and strengthen institutions for long-term sustainability.

**465**

Individuals supported

**5**

Federations registered

**1380+**Indirect  
Beneficiaries  
Outreached**276 Hrs**Training on good  
governance, financial  
literacy and bookkeeping

### Story of Guddi Devi

Guddi devi from Tapovan ( Joshimath) is a member of our Tapovan's Sewa Gouri Shankar SHG and a native of the Bhotiya community. She is the sole breadwinner of the family. Before joining Sewa she has prior knowledge of stitching the traditional Bhotiya community dresses and occupies a few basic tools and equipment. As Under this project, the group was provided with technical and product development training in the domain of tailoring with required information around the marketing linkage and support. With her Indigenous knowledge and the relevant input support via training, tools and techniques and assistance under this project she became a highly skilled tailor. As of present, she is a Master Trainer providing training in various SHGs in numerous villages of Tapovan cluster along with earning a modest monthly income (3000-4000 per month).



## Himsampada Uttarakhand



Himsapada is a farmers' producer company that ensures the upliftment of rural farmer communities by providing them with a platform for selling their products at a reasonable as well as fair pricing. Via this approach, these communities also feel empowered to make decisions about their business by providing access to input and output markets, while also adapting and engaging in better bargaining skills for enhanced market output.

### Origin of HimSampada: A Story of Empowerment

The journey of HimSampada began with the dedicated efforts of Sewa International, which initially formed Self-Help Groups (SHGs) to support local women. Recognizing the need for these women to become self-reliant, Sewa

International provided comprehensive training programs to empower them.

As the women grew more confident and resilient, they felt a profound sense of empowerment and ownership. This newfound confidence led them to take a significant step forward by establishing a collective farmer's producer company named HimSampada. Inspired by the women's initiative and independence, Sewa International continued to support them by facilitating market linkages and connecting them with producer companies. This collaborative effort not only strengthened the women's economic independence but also showcased the transformative power of empowerment and community support. Today, HimSampada stands as a testament to the success of these women and the unwavering support of Sewa International, reflecting a story of resilience, empowerment, and collective growth.



**1380+**  
Total collection



**217**  
SHGs are Share Holders







# 3

## Health & Sanitation

India deals with the issues of lack of health initiatives at the far flung areas. In order to tackle such issue, Sewa International works in the domain of Health and Sanitation.

Health and Sanitation based initiatives takes in priority the health crisis in India. These initiatives not only focus on providing the health initiatives to the community, but also providing sanitation related knowledge, information and practices to the adolescent girls as well.



# *Health & Sanitation at a Glance*

**1,82,554+**

Beneficiaries Supported

---

**1,09,374+**

Sanitary Napkins  
Distributed

---

**4,40,680+**

Out of Pocket Expenditure  
Saved (INR)

---

**35,000+**

Students offered clean  
Drinking Water facilities.

---

**24,375+**

Students sensitized on  
Menstrual Hygiene

---

**271+**

Villages  
Covered

**920+**

Toilets Constructed



# I. Water, Sanitation and Hygiene

*Sustainable Sanitation, Healthier Futures: WASH initiatives for Community Well-being*

Safe drinking water, sanitation and hygiene are crucial factors of a healthy society. WASH is not considered a prerequisite, rather an essential cornerstone. The acronym WASH was coined in 1988 by UNAID in order to promote safe sanitation practices across nations. Sustainable Development Goal 6 emphasises on access to safe drinking water, sanitation and hygiene, to promote well-being and good health of individuals.



Various studies have suggested that improper care of WASH practices has led to the various infectious diseases such as pneumonia, respiratory issues, diarrhoea, and other infestation issues. In 2010, Human Rights to Safe Drinking Water and Sanitation (HRTWS) was adopted under a UN resolution calling for safe, affordable and available drinking water and annotation for all the citizens of the country.



**11,900+**

Students engagement in  
School Cleaning Drives.



**20,000+**

Adolescent Students sensitized  
on Menstrual Hygiene

## **WASH-** Water, Sanitation and Hygiene

**E** Ensuring cleanliness and hygiene is crucial for promoting the educational well-being of students. To support this cause, Sewa International is actively engaging in various initiatives to support this endeavour. These interventions include infrastructure development, awareness campaigns and initiatives to foster behavioural change regarding menstrual hygiene and sanitation.

Through institutional strengthening, training programs and community engagement, Sewa International aims to empower local communities to take ownership of these initiatives ensuring their effective implementation and long term sustainability. This program is currently operational in three states of India, namely, Delhi, Karnataka and Maharashtra.





## Distribution

**83,124**

Sanitary Napkins Distributed

**75**

Hygiene Kit Distributed

**450**

Dustbins Distributed



## Infrastructure

**397**

Toilets Renovated

**262**

Handwashing station outlets

**75**

Water purifier/RO Installed



## Beneficiaries

**35,000+**

Students offered clean Drinking Water facilities.

**17,235**

Girls

**18,856**

Boys





# SHE: Sanitation, Hygiene and Empowerment

SHE aims to empower adolescent girls across the nation through various initiatives such as improving sanitation facilities, providing education of safe hygiene practices, dissemination of information about importance of menstrual hygiene, distribution of reusable and eco-friendly sanitary napkins. The project aims to build more than 500+ toilets in around 6 districts to tackle issues such as early dropout rates, lack of sanitation facilities at schools for girls.



**24,803**

Beneficiaries  
reached



**523**

Toilets constructed



**10**

Villages reached





# Menstrual Hygiene Awareness Program for Adolescent girls

Kishori Samuhs are an inevitable part of disseminating awareness about FNHW, i.e., Food, Nutrition, Health and WASH, thus focusing on menstrual hygiene. Through this project, Sewa International aims to impart knowledge and awareness to adolescent girls about menstrual hygiene and its safe practices. Additionally, the project provides information and knowledge related to preventive healthcare measures and promotes a balanced nutritional diet to enhance their overall well-being.



## 4,065

Beneficiaries  
outreached



## 523

Sanitary Napkins  
distributed



## 10

Trainings  
conducted

### They were educated about



The menstrual cycle



Usage of pads



Menopause



How to dispose  
of pads



Symptoms of  
getting Periods



Nutrition Diet



How to track  
period



Physical Exercise



Medication



Menstrual Cycle:  
What's normal,  
what's not



## II. Uncovering Health Horizons

### *Initiatives to promote safe hygiene practices*

Good health is a universal practice that contributes towards the overall development of the nation. The phenomenon of 'Uncovering Health Horizons' deals with the crucial issues such as availability of medical units at the unreachable areas, ensuring equitable access to quality healthcare in rural areas and promoting community health programs.

According to World Health Organisation ,

nearly half of the nearly half of the world's population lacks access to essential health services (WHO Report, 2017), emphasising on the urgent need for innovative solutions to overcome the inaccessibility and unavailability of primary healthcare resources. Considering the situation, initiatives such as Ayushman Bharat have been introduced in India in order to provide universal health coverage to over 500 million people, thus working towards achieving health equity. Additionally, bilateral agencies like USAID and UNDP have joined hands together to fight infectious disease, improve health structure and thus strengthen the health outcome of the nation.

Taking this ideation into consideration, Sewa International has introduced various initiatives poised towards unlocking new health horizons, ensuring healthier and better communities. Sewa International's initiatives focus on enhancing the accessibility of primary healthcare services.



## Mobile Medical Unit (Sewa Aarogyam)

Sewa International's Mobile Medical Unit offer general OPD consultation through MBBS Doctor screening and diagnostics, medicines for minor ailments, ECG Facilities, Hb and Number of Pathological tests and referral for higher treatment as well as spread awareness on preventive healthcare to target 5,000+ adolescent school children in 50+ schools and 10,000+ villagers from Rajasthan, Tripura and Uttarakhand states of India.

# 24<sup>days</sup>

in a month travel by  
Sewa Aarogyam Mobile  
Medical Unit



**Rajasthan**

**Uttarakhand**

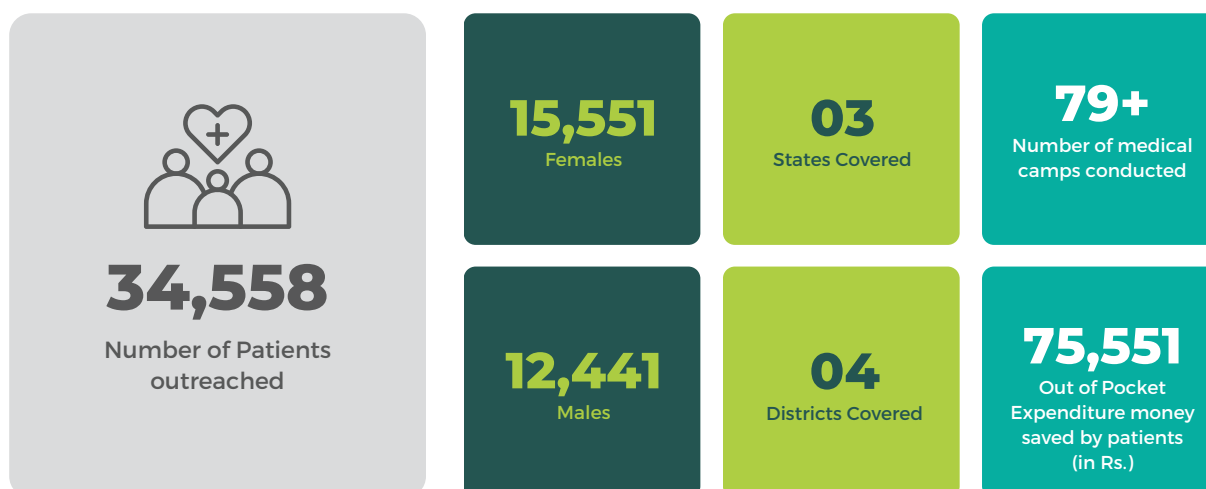
**Tripura**



These 3 states  
depict different  
types of terrain  
or regions

*A Mobile Hospital reaching door-to-door in 50+ villages, covering thousands of kilometers.*





As defined by The World Bank, **Out of Pocket Expenditure** is considered as an indicator which is utilised to understand the money spent by individuals on any household, including gratuities and in-kind payments, to health practitioners and suppliers of pharmaceuticals therapeutic appliances, and other goods or services, with the primary aim of enhancing the health status of individuals or population group. This expenditure is a part of private health expenditure.

## Adolescent project





# Salt Farmers Support Program



**Suresh Agariya**

(MALE, 42 YEARS OLD)



Suresh Agariya (Male, 42 years old) is a salt farmer from Bhachau block in Kutch district of Gujarat. He expressed that, “I am suffering from ophthalmic disorder stemming from my work as salt farmer.” He is suffering from ophthalmic disorder, just like thousands of other salt farmers of Gujarat. According to a cross sectional study conducted among the salt workers of Kutch, Gujarat, in order to assess the work-related health problems, the prevalence of ophthalmic disorder was found to be as high as 60.7%. Significant factors contributing to the disorder are irritation by direct exposure to sunlight and salt dust spreading on eye mucosa. In order to tackle the issue, Sewa International came up with a unique way of overcoming the situation and distributed non-prescription glasses to the beneficiaries. When asked about the intervention brought in by Sewa International, Suresh asserted that “Today, our problems have been identified and published by Sewa International. Now, the nation is also aware of our problems. Their generous donation has made a significant change in our society. We are grateful for such kind of initiatives in our community.”



Districts covered

Kutch,  
Patan and  
Surendranagar



**400**

Glasses distributed



**9**

Villages reached

# Aahar Kranti

This initiative by Sewa International, supported by Sewa USA works towards bringing out the wisdom of Ayurveda in front of the community to understand its benefits. Also, the power of spices that enhances the inherent immunity in the Indian population in order to prepare for any upcoming health crisis.

Moreover, disseminating awareness is another crucial aspect of this initiative.



**1,20,153,249**

People reached







# 4

## Education

At Sewa International, we are committed to fostering sustainable transformation through education. Our initiatives focus on giving every child a strong foundation and access to quality education, ensuring they have the opportunity to thrive.

We aim to tackle critical challenges such as improving learning outcomes, reducing dropout rates, enhancing teaching resources, sponsoring education, and upgrading school infrastructure, including libraries.

# Education at a Glance

**29,696+**

Students benefited

**4** Union Territory

**23** States covered

**301** Learning Centers  
Established

**1,414** Schools affiliated  
with us

**367** Number Volunteers  
Engaged

**3637** Number of children's  
education supported

**12,000+**

School kits distributed





# I. Inclusive Education

Inclusive Education represents a progressive approach in the field of education, emphasising on providing education to all students irrespective of caste, creed, gender or any other societal discrimination. This concept was adopted at the 'World Conference on Special Needs Education' (Salamanca Statement, Spain, 1994), and thus was reinvented by World Education Forum. The idea behind making education inclusive originated from the concept of accessibility. As defined by Unicef (2007), Inclusive Education (IE) is a process of addressing the diverse needs of the target population, by reducing the maximum barriers and creating a cohesive learning environment. This concept is gradually strengthening the capacity of education system in order to cater to all types of learners. In India, National Council for Educational Research and Training (NCERT) collaborated with Unicef and launched Project Integrated Education for Disabled Children (PIED) in 1997 to strengthen the integration of learners with disability in the education system. However, with time progressed, the concept evolved and has not been constrained to disabled children, rather includes students with disadvantages and lack of resources availability.

Considering the current situation in India, where 50% of students deal with lack of accessibility to primary education (stated by Development Economist, Mr. Amir Ullah Khan), Sewa International steps up and initiates projects that focus on imparting quality education to each student.

Sewa International believes in the ideology of 'Putting the Last First' by Robert Chambers. This principle inspires the organisation to prioritise serving the underprivileged community first, recognizing their lack of basic resources. By adhering to this approach, Sewa International endeavours to support the underprivileged and underserved communities by offering them access to quality education, thus contributing towards the UN's Sustainable Development Goals.





# Sponsor A Child

Unforeseen events like sudden death of a parent, major health crisis or a job loss can severely jeopardize a child's education. In response to these challenges, Sponsor a Child program was introduced, to provide educational support to children facing unexpected challenges. This initiative ensure that even in the times of unpredicted crisis, children's education will not be compromised. Though this initiative, we have supported XXX number of male child and XXX number of female child.

**3,637**

Students Sponsored

**4,37,02,995**

Fund Released (Rupees)

**1,264**

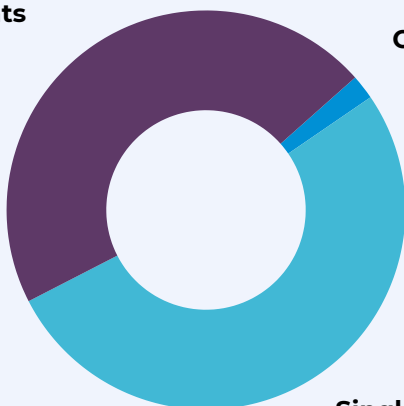
Schools

## Eligibility

- ✓ For students studying in Class 1 to 12 in a private or government-aided school.
- ✓ 55% marks (or Grade C1) in the previous qualifying examination.
- ✓ Annual family income must be less than or equal to INR 2.5 lakh (2,50,000 INR).
- ✓ Only two children from a family.

Both  
Parents  
Alive  
46%

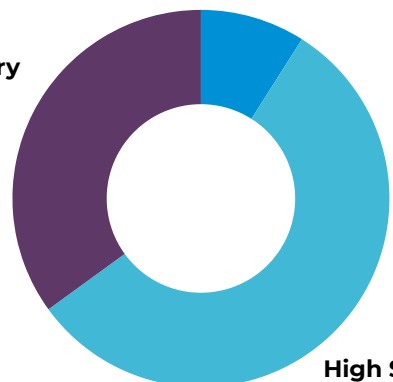
Orphan  
2%



Single Parent  
52%

Higher Secondary  
9%

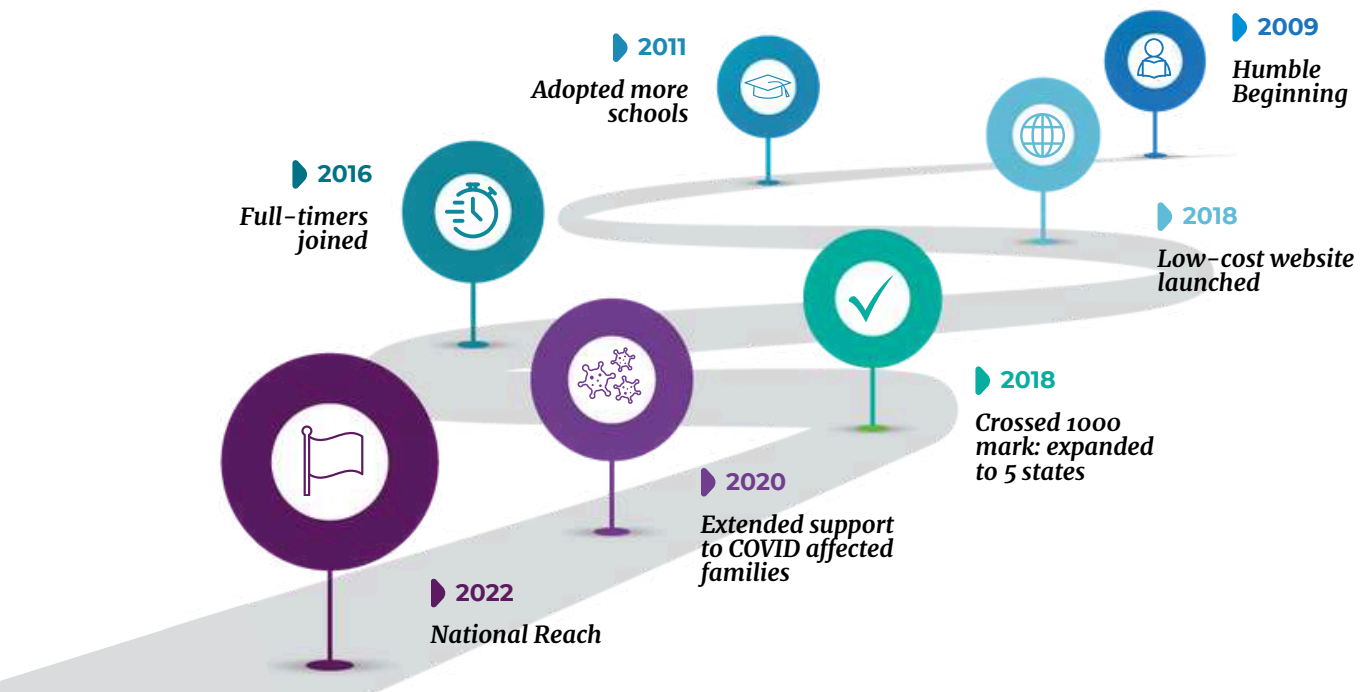
Primary  
35%



High School  
56%

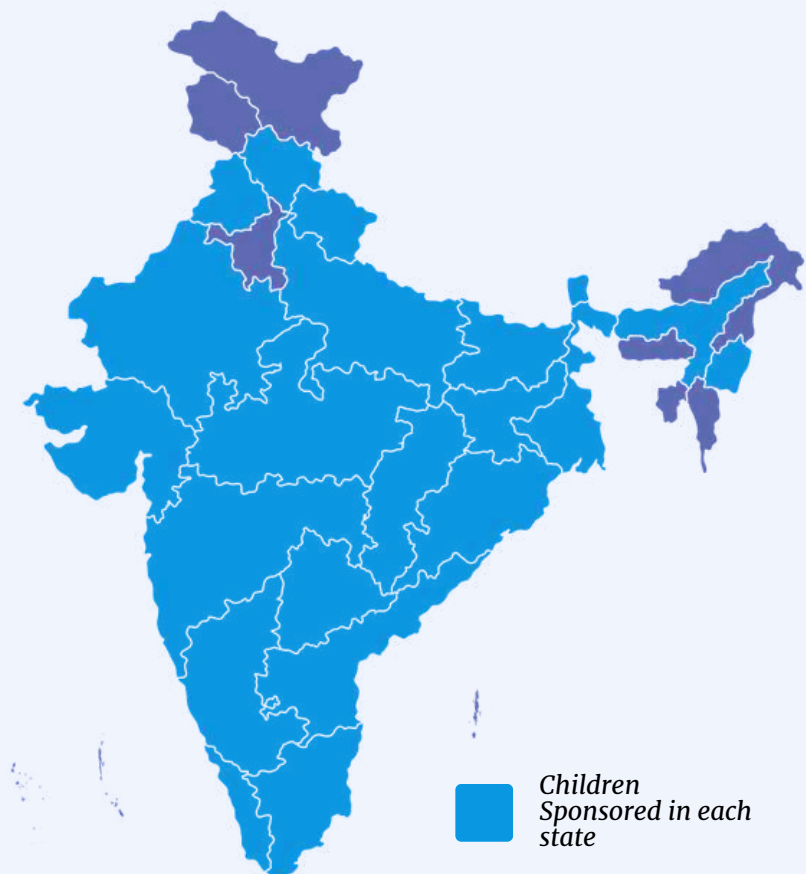


## Our Journey/ Milestone from 2009- till today



## Children Sponsored in each state

Telangana (1084)  
 Tamil Nadu (560)  
 Karnataka (384)  
 Chhattisgarh (363)  
 Maharashtra (258)  
 Madhya Pradesh (223)  
 Andhra Pradesh (208)  
 Kerala (181)  
 Rajasthan (151)  
 Assam (64)  
 Uttar Pradesh (34)  
 Gujarat (34)  
 Punjab (27)  
 Manipur (16)  
 Andaman And Nicobar (ut) (10)  
 Puducherry (UT) (9)  
 Uttarakhand (8)  
 Odisha (8)  
 Bihar (4)  
 West Bengal (3)  
 Jharkhand (3)  
 Himachal Pradesh (3)  
 Sikkim (1)  
 Goa (1)



## Urban Project for Linguistic Intelligence & Future Transformation (UPLIFT)



This initiative endeavours to cultivate language proficiency, enhance logical reasoning and foster critical thinking among children residing in the slums and streets of Delhi. The goal of this project is to facilitate their comprehensive development and enhance their educational achievements & learning outcomes.



**480+**  
Students impacted

### Our 5 centres in Delhi-NCR

1. Seva Bharti Kendra, Baljeet Nagar, ND
2. Seva Bharti Kendra, Narayina Vihar, ND
3. Seva Bharti Kendra, Noida Sec 12, NCR
4. Seva Bharti Kendra, Basai, Sec 70  
Noida, NCR
5. Gayatri Charitable Trust, Eta-1, Greater  
Noida





## II. A Learning Continuum

A learning continuum refers to a framework or concept that represents the progression of learning or skill development over time. It suggests that learning is not a discrete event, rather a continuous process that occurs along a spectrum or continuum. In this process, individuals start with basic knowledge or skills and gradually advance towards a more complex or advanced level while continuously learning, experience and practice. This type of learning method is designed to design personalised curriculum for students and, thus further support them in their learning path. This method adopts the ideology of creating content that can be utilised by students in order to enhance their learning.

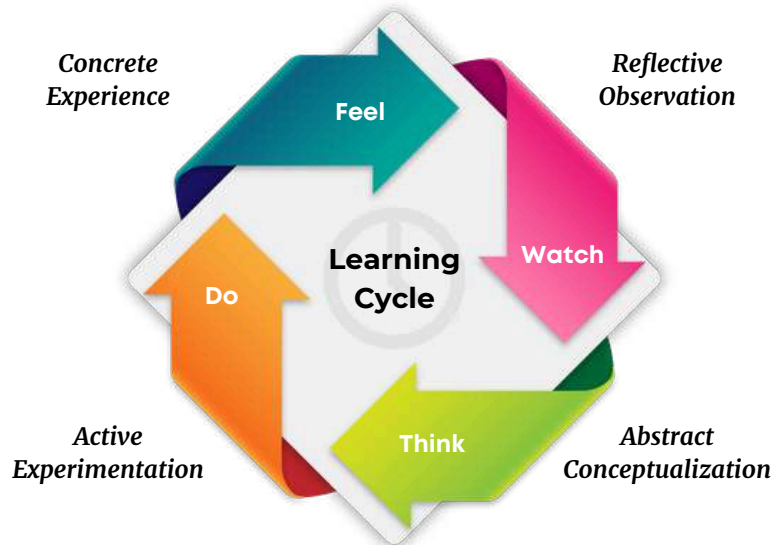
Sewa International believes that learning is a long process, where learners are involved at the beginner stage and continue to develop their knowledge along a spectrum of progress. This process allows the person to view learning as a series of discrete stages or milestones, whereas the continuum highlights the interconnectedness and progression of learning experiences.

Sewa International's projects primarily target holistic development, aiming to enrich the learning experiences of students hailing from rural areas, who face resource constraints but possess the potential to shape a brighter future.



## The Learning Cycle

The learning cycle of Kold was developed by David Kolb in 1984, and clearly represents the experiential learning process. Sewa International has been working on capacity building of students for all age groups, thus engaging them in the cycle of learning. Providing kit bags to students, in order to enhance their motor and cognitive skills, and further engage them with the habit of learning as part of their process.



## School Adoption Program

Classroom infrastructure, conducive environment, extracurricular activities and a healthy environment together contributes towards fostering a learning environment for students. This program is dedicated to extending these benefits to schools, with a primary focus on creating conducive environment to learn more, hence activities such as wall painting, visit to science museum, computer lab setup in school, sports day celebration with extra-curricular sports and STEM exposure to students. This initiative aims to evoke feelings of excitement, comfort, provide, motivation, positivity, focus and a sense of belonging to school. Such an environment enhances the overall educational journey, fostering a love for learning and personal growth among students.





## Science, Technology, Engineering, and Mathematics

This program aims towards inculcating STEM related intellect quotient in underprivileged students, coming from local community of Delhi and Maharashtra. This program consists of a variety of components including a well-established STEM lab, internet connectivity, software modules, induction kit, experiential-based learning through project assignments. This program targets 100 eligible students and aims towards providing them training through well-developed STEM Module.

**4,851+**

Students outreached

**8**

STEM Labs established in Delhi-  
NCR, Chennai, Gurugram,  
Maharashtra,



### Shivanshu's Transformative Journey with Sewa

Shivanshu, a class 9 student from Delhi participated in Sewa International's STEM initiative. His initial exposure with STEM gave him the required enthusiasm, because of which his interest for robotics was recognised by the team. Recognising his interest in this endeavour, he was provided with the opportunity to delve deeper into this field by engaging in Door Lock project (an application based project). Shivanshu's skills flourished and he emerged as a team leader guiding his peers, while actively contributing to the project's success. His story exemplifies the program's ability to identify and nurture individual talents, fostering not just technical skills but also leadership and collaboration.





## III. Equitable Education Accessibility

Accessible Education is an evolving effort to ensure that education is readily available to all members of society. This concept emphasises the degree to which an individual can access and obtain benefit from educational resources. It encompasses various factors such as geographical, physical, cognitive and social aspects about availability of resources to gain education. Various International policies, including the United Nations 2030 for Sustainable Development (United Nations, 2015) and the UNESCO Education for All initiative (UNESCO, 1990), have highlighted the importance of providing fair learning experience, regardless of any pertaining difference.

In India, the learning outcomes among school children show significant scope for improvement, as highlighted by World Economic Forum.



The National Achievement Survey (NAS) of 2021 reported an average learning level of 59% in grade 3, 49% in grade 5, 42% in grade 8 and 36% in grade 10. This suggests a drop in academic achievement with students progressing in education. This situation could stem from lack of resource availability to students, consequently leading to a state of educational disparity in India. Ensuring accessibility of education is essential for promoting equal opportunities for all individuals to acquire knowledge, develop skills and reach full potential, regardless of socio-economic background, geographical location, disability or any other barrier.

Sewa International has implemented and is actively engaged in projects aimed at addressing the educational accessibility gap within the nation. The organisation's primary objective is to diminish geographical barriers to education, since rural-urban divide exists at length among the community. Therefore, Sewa International fulfils its role by providing students with Kits bags and other essential resources, bridging the gap and ensuring that students have the necessary tools to access quality education.

## SEEK – School Kit Distribution Project



**5,750+**  
School kits distributed



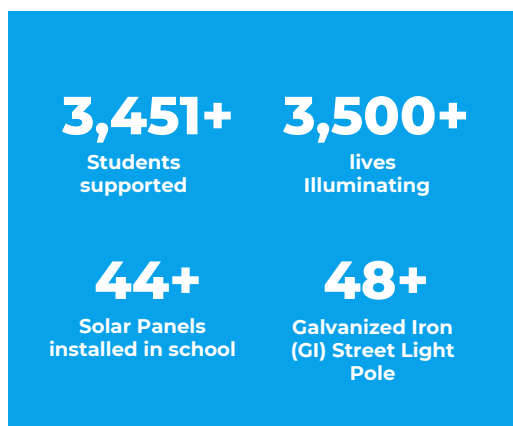
**14+**  
States covered

School Education Empowerment Kit focuses is designed to effectively meet the fundamental needs of students, fostering a conducive learning environment. This initiative aims to instil confidence among underprivileged children and improve their learning experience, while simultaneously encouraging them to attend school diligently without dropping out on basic education. This unique kit includes basic stationery items including school bags, notebooks, pencil box, drawing book, crayon, water bottle, lunch box etc, to support students with academic pursuits.



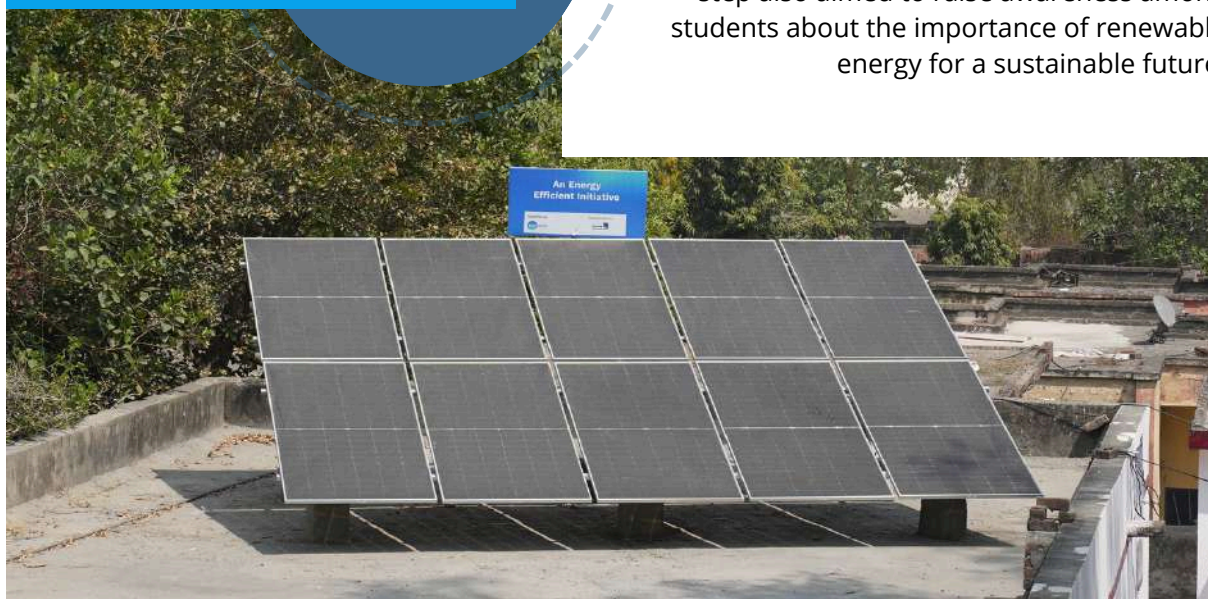
**8,625+**  
Students back to  
education fold





## School Solar Support

Under this project, solar systems were installed in the identified schools, aiming to promote sustainable energy solutions. With the belief that the optimal utilization of resources can significantly contribute to reducing carbon footprints, the solar panel initiative was introduced to foster eco-friendly practices within educational institutions. This step also aimed to raise awareness among students about the importance of renewable energy for a sustainable future.





## Akshar Bharati

Through this initiative, Sewa International aims to bridge the literacy gap existing in India by providing access to education even in the remotest areas of India. This initiative fosters learning among children by providing 'Learning on Wheels' concept.

The initiative is further working by 3 activities:

- Junior Aryabhata: This initiative offers scholarships to students, ensuring financial support for their continued education and academic growth.
- Library on Wheels: Focused on enhancing accessibility, this initiative delivers mobile libraries to students in remote areas, providing them with essential educational resources otherwise unavailable in their communities.
- Junior Kalam: This program provides scholarships and promotes exposure to STEM (Science, Technology, Engineering, and Mathematics) education, fostering students' scientific aptitude and supporting their career development in the field.

## DEEKSHA

Sewa International, in collaboration with the Deeksha Foundation, is dedicated to providing quality resources and classes for civil services aspirants from underprivileged sections of society. This initiative features smart classrooms and digital boards as key components.

The project aims to achieve the following objectives:

- To offer affordable offline coaching classes for the UPSC civil services examination to underprivileged youth.
- To provide classes from subject experts for both the prelims and mains of the civil services examination through digital platforms and social media, accessible to underprivileged youth.

To establish a library facility to fulfill the reference book needs of students preparing for the Civil Services examination.

# 30

**Aspirants Mentored  
and Trained for UPSC**

## Sainik Parivar Kalyan Niwas

The Project is designed and implemented by Sewa International (Bharat) in collaboration with Akhil Bharatiya Poorva Sainik Seva Parishad (ABPSSP), entails providing educational scholarships to the wards of Ex-Servicemen (ESM), who are either killed in action or, died whilst in service due to circumstances attributable to military services based on the principle of "Merit Cum Means".

The proposed scholarship scheme will be having two categories viz.,

- INR 10,000 per student for non-professional courses and,
- INR 10,000 per student for professional courses.

# 125

**Students served  
across 5 states**



# 5

## Environmental Action

The environment has always been a crucial domain for our work, as it faces continuous degradation with each passing day.

Recognizing the urgent need for environmental conservation, Sewa International has been pioneering innovative initiatives to preserve, protect, and promote the environment. Our dedicated efforts aim to ensure a sustainable future for generations to come. We are committed to fostering a global movement towards environmental stewardship and resilience.



# Environment at a Glance



**8,000+**

Environment friendly products produced

**150+**

Participants mobilised for mass cleaning activities

**500+**

Students sensitised towards environmental and health related issues

**1100+**

Households sensitised on waste management by 'Kachrasur' character, introduced by Sewa International Uttarakhand team



# Environment, Education & Exposition

Our planet earth provides a habitat for a population of 8.1 billion individuals. Environment is not simply vital for human existence, it serves as a cornerstone of existence for every living being on the planet. The intricate tapestry of our world is woven with various threads, among which environment, education and exposition, can be interconnected to highlight the impact on human society and personal development.

Environment, the natural world around us, from the air we breathe to the water that sustains life and shapes our life. It directly influences our life and supports sustenance, survival and prosperity of humankind. Education, on the other hand, is dynamic and is expected to bridge the gap that lies

between understanding any concept. It equips individuals with skills, knowledge and value, enabling them to become empowered in making informed decisions.

Exposition which can be understood as the act of explaining, revealing and making some concept clear. This concept helps in disseminating ideas, experience and knowledge to the society.

The intersection of all three concepts create a synergy that can lead to a more informed, conscientious and proactive society. In line with understanding this, we can aspire for a sustainable future equipped in knowledge, understanding and shared human experience.





## PRAWAH: The Eco Mission

PRAWAH stands for Participatory, Rejuvenation, Afforestation & Waste Management Along with Himalayan Springs. The Project entails waste management and afforestation along the Himalayan springs via promoting public awareness & participation following a landscape approach. PRAWAH is an idyllic journey, which aims to make the Himalayan Springs plastic free with community approach, as PRAWAH believes Together we can reach the Peak with the following objectives -

- **P**lastic free Springs
- **R**evive Water Capillary
- **A**fforestation
- **W**ater Rejuvenation
- **A**ssure Waste Management
- **H**igh Developing Water Volume

This program covers a varied variety of initiatives, focused on conserving the environment

### Our Eco Mission Initiatives



#### Cleanliness and Afforestation Drive

The drive helps keep locations litter-free while serving as a vital platform to educate and engage local communities in preserving natural heritage. Additionally, these initiatives act as action-oriented advocacy campaigns, encouraging policymakers to prioritise environmental conservation.

### Plog for Sewa

The plog for sewa initiative focuses on cleanliness of a particular area. This initiative aims towards making the environment clean and green by inculcating the values of Sewa Bhav in the individuals. This eco mission is a collaborative effort involving a total of 280+ women from self-help groups (SHG) and young students from Uttarakhand. Trekking through the rugged mountain terrain, meticulously cleaning up the litter strewn across Kartik Swami Mandir, Tungnath Chopta to the Main Road in Makkumath, these volunteers left no stone unturned in their quest to restore the natural beauty of their beloved Dev Bhoomi.



## Our Eco Mission Initiatives



### Door-to-Door waste collection via Prawah Panther

The drive helps keep locations litter-free while serving as a vital platform to educate and engage local communities in preserving natural heritage. Additionally, these initiatives act as action-oriented advocacy campaigns, encouraging policymakers to prioritise environmental conservation.

## Source Segregation and Waste Management Training

The improper disposal of garbage in valleys, roadside, rivers and mountains poses significantly environmental risks. Waste management efforts often overlook rural areas, despite over 30 million annual tourists generating more than two-thirds of the state's waste. To address this, Sewa International launched an initiative focusing on Source Segregation in Uttarakhand's rural households, targeting the rise in single-use plastics. The program reached 1,129 households across 56 villages in Chamoli and Rudrapur, providing crucial waste segregation training to 106 user groups.



## The value we clean for



**Clean water and sanitation:** Learning to avoid wasting water



**Climate action:** Acting now to stop global warming



**Life below water:** Avoiding single use of plastic bags to keep the oceans clean



**Life on land:** Planting trees to help protect the environment



**Responsible consumption and production:** Recycling items such as paper, plastic, glass and aluminum



**Sustainable cities and communities:** Using public transport to move towards sustainability



Out of 17 Sustainable Development Goals 2047, 7 goals are dedicated towards promoting sustainability and safeguarding the environment, thus generating an imperative need towards conserving the environment. Sewa International believes that the environment is an integral part of overall development of the nation and thus, optimum utilization of resources without disrupting nature, can prove to be a way to achieve those sustainable development goals.

By protecting and nurturing the environment, we are investing in the well-being of our generations to come. The environment sustains, inspires, and provides us with the resources necessary for our survival. Recognizing its importance is not just an obligation, rather a fundamental necessity for the survival of life on Earth. Here, Sewa International is playing its part in serving mother nature.



## Our Eco Mission Initiatives



### World Environment Day celebration with Qala Kauthig:

With focus on the theme of 'Solution to Plastic Pollution', Qala Kauthig was celebrated on the World Environment Day. The event highlight was the exhibition set up by school students highlighting their artwork made out of recycled plastic. 300 people attended the event and witnessed various sustainable solutions to plastic pollution.

### Street play focusing on environment with a character named Kachrasur

The improper disposal of garbage in valleys, roadside, rivers and mountains poses significantly environmental risks. Waste management efforts often overlook rural areas, despite over 30 million annual tourists generating more than two-thirds of the state's waste. To address this, Sewa International launched an initiative focusing on Source Segregation in Uttarakhand's rural households, targeting the rise in single-use plastics. The program reached 1,129 households across 56 villages in Chamoli and Rudraprayag, providing crucial waste segregation training to 106 user groups.



## ARECA-NUT Leaf Plate Production Unit

In North- Tripura, arecanut trees are found in abundant quantities, providing a unique opportunity for sustainable development. Sewa International launched an entrepreneurial and environmental initiative to leverage these resources, enabling locals to generate livelihoods by producing eco-friendly plates and other crockery from arecanut leaves. This project not only supports economic growth but also promotes environmentally safe alternatives, contributing to both well-being and environmental conservation.



In this fiscal year,

**8853+**

items have been produced by the locals of Tripura, out of which approx

**3000**

items have already been sold by the members of community



# Beach Cleaning Drive



Beaches are of aesthetic, recreational and social value for humans as well as a habitat for a number of plant and animal species. The beach cleaning drive in Mumbai was organized as part of Sewa International's environmental conservation efforts. The objective of the drive was to promote volunteer engagement and raise awareness about the importance of maintaining clean and healthy beaches.

Total  
Participants:  
**140+**

Date:  
**22/03/2024**

Location:  
**Dadar Beach,  
Mumbai**





# Street Play

## *Hehe Haha*

---

Promoting Health, Education,  
Hygiene, and Environment

Sewa International's most recent endeavours involves leveraging the power of theater to bring attention to critical WASH issues. Through an engaging theatrical play HEHE-HAHA (Health, Education, Hygiene, and Environment), Sewa International seamlessly blends entertainment and education to promote awareness and instigate behavioural shifts. This creative endeavor serves as a poignant reminder that investing in HEHE today can pave the way for a future filled with laughter and well-being.







# 6

## Leadership Development

The Leadership Development domain represents the Sewa Fellowship, an initiative by Sewa International which focuses on developing human potential and empowering grassroots organizations to tackle India's socio-economic and cultural challenges. We believe in the power of youth to drive innovation, lead meaningful change, strengthen communities, and pursue truth and justice.

Together, we are working towards building a stronger and more resilient Bharat.

# Sewa Fellowship

*Nurturing Impactful  
Lives...*

Sewa Fellowship would enable young, bright minds to serve Bharat with enriching learning opportunities with global experts, combined with extensive grassroots experiences across the nation.



Sewa Fellowship is a strategic investment in human capacity, and grassroots organizations to build solutions for India's complex socio-economic-cultural matrix. We believe in the power and potential of youth to drive ideas, run movements, nurture organizations, and seek truth and justice to together build a better Bharat.

As a 100-week program, the fellowship equips young, bright minds with knowledge, skills and a mindset to serve. With extensive mentor support, the program bridges the needs of grassroots development with a vision for the future.



Fellows



Domains



Host  
Organizations



Districts





## Program Philosophy

The program is deeply rooted in the philosophy of Yoga: the connectedness of our inner and outer selves, being in resonance to live a life of purpose. As part of the Sewa Fellowship, we explore this connectedness of our intrinsic nature: SwaBhava, our authentic identities: SwaRoopa, and how the resonance of the two lead an individual towards fulfilling one's SwaDharma. This is our framework for future social leaders to help them understand and navigate life with a higher purpose.

## Our Values



## Key Features



### Doer's Perspective

Nurturing first-principles based understanding of community work by engaging with a leading grassroots organizations.



### Community of 'ONE'

Creating a community of changemakers with an aligned vision of building nation together.



### Guided Reflections

Building self-awareness with guided reflective exercises to navigate the mind in meaningful direction.



### Expert Mentorship

Fellows will get constant expert support of domain experts and senior social leaders during the fellowship journey.



### Positive Support

Empowering the learning journey of the fellows in the form of financial support, enriching experiences.



### 100 Weeks: Serving Bharat

Devoting 23 months in serving Bharat with grassroots communities and technical assistance.



# Community Engagement Activities

Through these volunteer activities, Sewa International provides a platform for corporation and other working bodies to engage in meaningful volunteerism, rooted in the belief of "promoting grassroots volunteerism" with the guiding principle of *Vasudhaiva Kutumbakam—the world as one family*.

By involving volunteers, Sewa International is fostering a collaborative environment for community development, where each individual contributes to the nation's collective growth and progress.



Library setup at Sewa Dham benefitting 300 students



Cycle Distribution to 50 girl students as a unique activity during Sewa Yatra by US expatriates



500+ Blanket were distributed during winters to support the underprivileged



Winter clothes distribution to 300+ children in slum areas



Exposure visits to science museum organised for 500+ students to enhance their scientific temperament



# RESEARCH



Research and Advocacy are critical pillars for the success and sustainability of any social organization. At Sewa International, we recognize that robust research is not just about data collection, but about generating insights that shape and refine our interventions. Our research spans a wide range of studies, from assessing the tangible outcomes of our projects to exploring how communities cope with and adapt to challenges. This evidence-based approach allows us to advocate for policies that address real needs, drive social change, and build stronger, more resilient communities. Through continuous learning and research, Sewa International strengthens its mission to serve and empower marginalized populations.

# Study on Equine Dung Management in Kedarnath by Sewa International & District Tourism Development Officer, Rudraprayag. 2023

A descriptive study titled "Study on Equine Dung Management in Kedarnath" authored by Sewa International and the District Tourism Development Officer, Rudraprayag, in 2023, sheds light on a pressing issue of equine dung management on the route of the sacred pilgrimage site of Kedarnath. As a pivotal destination in the Char Dham Yatra, Kedarnath attracts a significant influx of religious tourists, necessitating various modes of transportation, including horses and mules, to access the temple through challenging terrain and harsh climates. Recent data indicates a notable increase in pilgrim footfall, consequently escalating the population of equines utilized for transportation and, consequently, equine dung production along the pilgrimage route resulting in ecological impact. To address this issue, a descriptive research methodology was employed, and extensive literature was reviewed to understand existing practices, challenges,

and potential solutions regarding equine dung management in similar pilgrimage sites or ecologically sensitive areas. This approach allowed for a comprehensive examination of the issue providing valuable insights to inform future management strategies and policies aimed at mitigating environmental impacts and promoting sustainable tourism practices in Kedarnath.





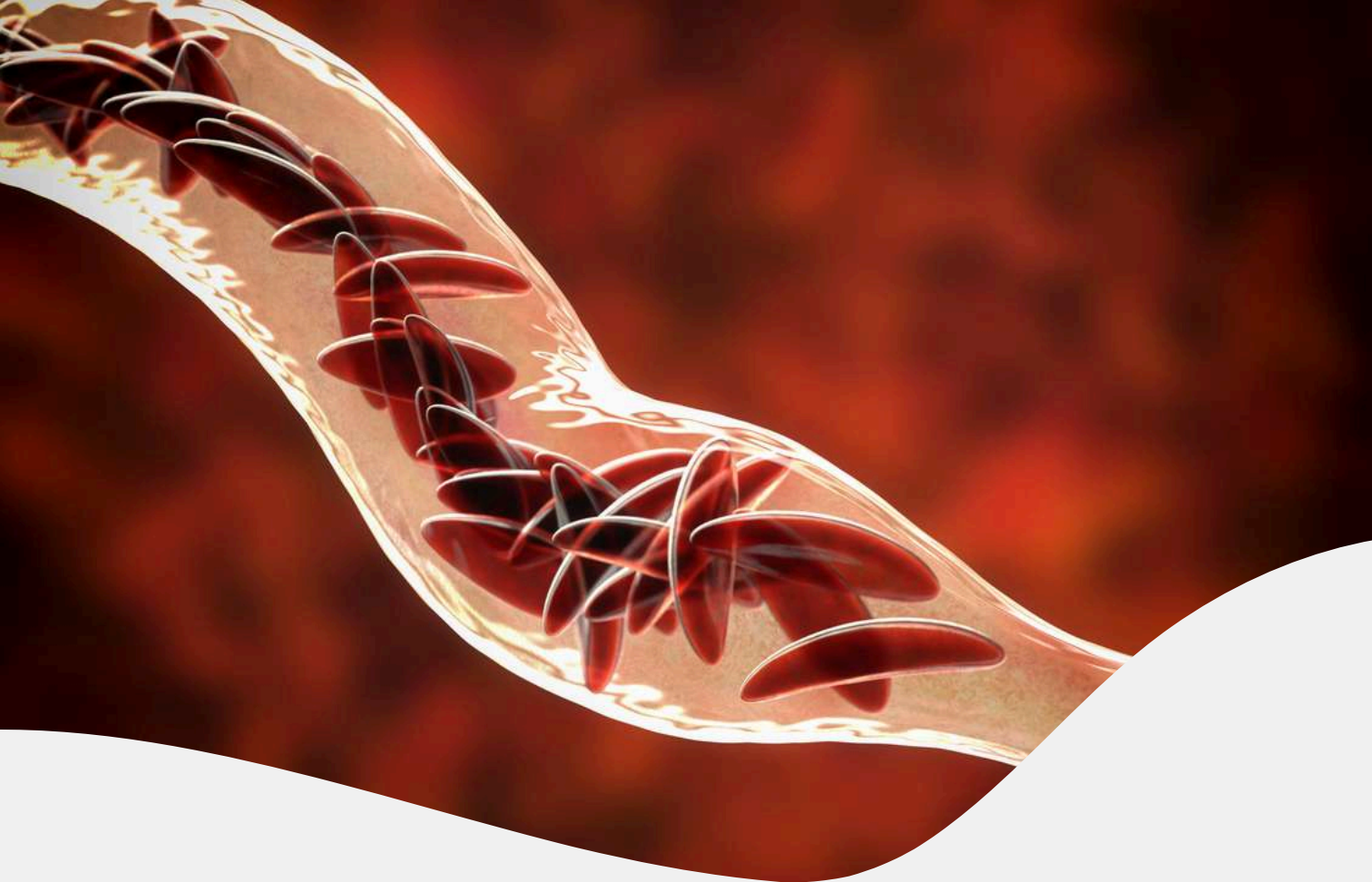


## Cross-cutting Two Strategies from the Himalayan States: Accelerating SDGs through Women-led Development Processes by Sewa International and YS Parmar University

Sewa International and YS Parmar University jointly published policy brief titled 'Cross-cutting Two Strategies from the Himalayan States: Accelerating SDGs through Women-led Development Processes,' tailored for Task Force 6: Accelerating SDGs: Exploring New Pathways to the 2030 Agenda under the G20 Summit held last year in India. This strategic initiative aims to harness the power of women-led development processes as a catalyst for advancing Sustainable Development Goals (SDGs) in the Himalayan States. By leveraging the expertise and resources of both academic and non-governmental sectors, this policy brief outlines innovative approaches to accelerate progress towards the 2030 Agenda, particularly in the context of gender equality and inclusive development.

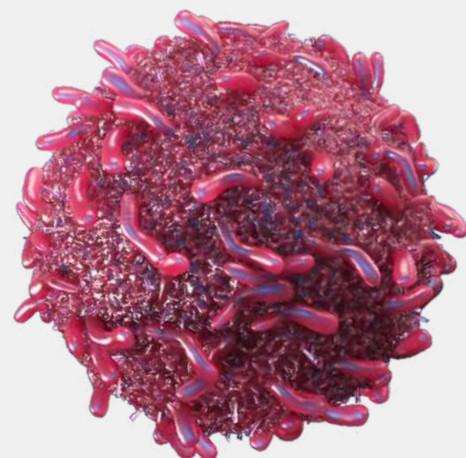
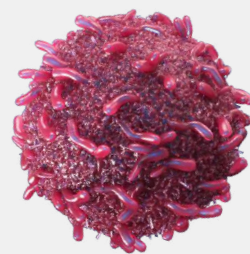
Aimed towards imparting awareness on menstrual health & hygiene and nutrition to target adolescent girls and women through mobilisation of Kishori Samuhs. Under the initiative, the organisation conducts Menstrual Hygiene Camps spreading awareness, knowledge and information on menstrual hygiene best practices, preventive healthcare measures and balanced nutritional diet towards their daily general well being, in the state of Tripura.





## Exploring the Landscape of Sickle Cell Anaemia among tribes in Wayanad, Kerala

The study by Sewa International examines the awareness, perceptions, and healthcare needs related to sickle cell disease among tribal communities in Wayanad, Kerala. It highlights that education significantly impacts awareness levels, more so than economic status, while age, gender, occupation, and tribe show weaker correlations. Despite moderate awareness, misconceptions about the disease's symptoms, inheritance patterns, and healthcare programs persist. The community supports increased awareness and equitable treatment, though inconsistent healthcare-seeking behaviors pose challenges. Recommendations include detailed surveys, educational campaigns, genetic counselling, and community engagement to improve healthcare accessibility and support systems. The study aims to inform policy decisions and resource allocation for managing sickle cell disease in remote indigenous regions, using Swami Vivekanand Medical Mission's intervention in Wayanad as a case study.





# EVENTS



Sewa International's events span a diverse range of themes, from women empowerment initiatives to community participation programs. Over the past year, we've conducted numerous activities designed not just for celebration, but as a platform for raising awareness, fostering solidarity, and mobilizing collective action. Each event is a vibrant blend of cultural appreciation, social learning, and community engagement, embodying our mission to build a more inclusive and compassionate society. These events have successfully brought together people from all walks of life, allowing them to connect, share experiences, and contribute towards making a tangible impact in their communities. Our journey over the past year is a testament to the power of unity and the spirit of service, as we continue to advocate for positive change through every initiative.

# Talk4Tomorrow

## Corporate Philanthropy Shaping the Future of 'New Bharat'

Talk4Tomorrow, a distinctive and euphoric event, organised on February 13th, 2023 (Tuesday), with the aim of exploring the realms of 'Inclusivity' and 'Sustainability' in Corporate Social Responsibility (CSR) initiatives, catering to more diverse communities. The event aimed to facilitate collaboration between NGOs and Corporates, providing NGOs with an opportunity to network, connect and reflect with the Corporates who have interest in sharing their CSR visions with the idealistic NGOs. The event anticipated the presence of over 50+ corporates and 20+ non-profit organisations, with NGOs provided the opportunity to showcase their core projects at stalls set up for the purpose.

25

Corporates

26

NGOs

67

Attendees

40

Stall



Apparel House,  
Gurugram

### Event Highlights

**01** Keynote address by Hon'ble  
Krishan Pal Gurjar ji (MoS Power  
& Heavy Industries)

**02** Stall presentation by  
participating NGOs, to showcase  
their work in the field

**03** Networking of Corporates and  
NGOs



sewa  
International

Presents

Talk4Tomorrow

Corporate Philanthropy Shaping the Future of  
'New Bharat'

13th February 2024

Gurugram, Haryana

Supported by

BIN  
SC  
DE



## Chief Guest



**Hon'ble Sh. Krishan Pal Gurjar**

*Minister of State for Power and Heavy Industries, GoI*

## Guest of Honour(s)



**Sh. K. Rajaraman**

*Ex- IAS & Chairperson,  
International Financial Services  
Centres Authority*



**Sh. Nand Kishore Aggrawal**

*Chairman,  
Crystal Crop Protection Limited  
Chairman ,  
PHDCCI Agri-Business Committee*



**Sh. Gopal Krishna Agarwal**

*Independent Director  
of Bharat Petroleum  
Corporation Limited  
(BPCL)*

*"Bharat is moving towards becoming an innovative and entrepreneurial nation. By aligning entrepreneurial efforts with social causes and leveraging resources and expertise, we can drive positive change on a broader scale."*

**-Hon'ble Sh. Krishan Pal Gurjar**

Minister of State for Power and Heavy Industries, GoI

*"Corporate Social Responsibility (CSR) policies in Bharat hold immense potential to bridge the gap between administration and societies, while simultaneously strengthening the nation's socio-economic fabric."*

**-Sh. K. Rajaraman, Ex-IAS Current Chairman,**

International Financial Services Centres Authority (IFSCA)

*"Over the past decade, the government has collaborated with public sector undertakings to improve the nation's well-being, by identifying 121 aspirational districts in need of advancement in health, education, sanitation or any other social issue pertaining to the society."*

**-Sh. Gopal Krishna Agarwal**

Independent Director at Bharat Petroleum Corporation Limited

# Deepotsav 2023 Annual Media Meet

It was an honour to have with us eminent guests like Sh. Uday Mahurkar, (then Information Commissioner, GoI), Sh. Santosh Mishra (Former IAS), Sh. Saumitra Gokhale (Social Worker), Sh. Shyam Parande (Secretary, Sewa International) alongside the young journalists.

In the brewing conversation, we explored the power of showcasing positivity to reshape the global perception of Bharat and the importance of presenting 'satya' (truth) in our narratives.



**Sh. (K.G.) Shyam Parande**  
(Secretary, Sewa International)



**Sh. Uday Mahurkar Ji**  
(Information Commissioner, GoI)



**Sh. Saumitra Gokhale**  
(Social Worker)

## Event highlights:

- Networking with Media and PR professionals
- Keynote address by Sh. Uday Mahurkar Ji about the nation's collective goal of 2030 agenda
- Discussion with the budding media professionals



**70+**

**Renowned  
Journalist  
participated**



**3rd November, 2023**



**05:30PM-08:00PM**

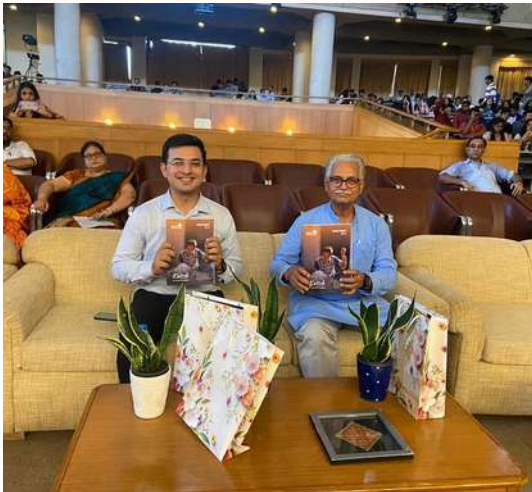


**Pravasi Bhawan**





## Role of Youth in Nation Building



**300+**

Students  
Participated



**3rd November, 2023**



**Jaypee Institute of  
Information  
Technology, Noida**

Recognising the immense power and significance of youth, Sewa International unites the vibrant young generation of New Bharat, fostering a platform for the voices to resonate and drive impactful change. Looking back at an incredible journey of 25 years, we are overjoyed to share glimpses from the Annual Report launch of our Silver Jubilee celebration.

The event was graced by the esteemed presence of Prof Bodh Raj Mehta, Vice Chancellor of Jaypee Institute of Information Technology, Shyam Parande, Secretary of Sewa International, and Shubhankar Mishra, Journalist.

The festivities also unfolded with an amazing Craft Mela showcasing indigenous arts & crafts that have been at the core of our impactful journey.



**Annual Report  
2022-23  
launch**



**Keynote session  
by Chief Guest**



**Crafts mela  
showcasing  
indigenous art  
and crafts**



# Interaction with Laxmi Narayan Tripathi

**50+**

Attendees



**3rd November, 2023**



**Pravasi Bhawan,  
New Delhi**

The event featuring Laxmi Narayan Tripathi, a prominent LGBTQIA+ activist and speaker, was organised with the aim of raising awareness about LGBTQIA+ rights, promoting inclusivity, and fostering dialogue on diversity and acceptance within society. This event was planned for the Sewa family.



**Aryan Pasha**

Chief Operating Officer(COO)  
and Strategist,  
SITAL PARIVAR



**Anjali Rimi**

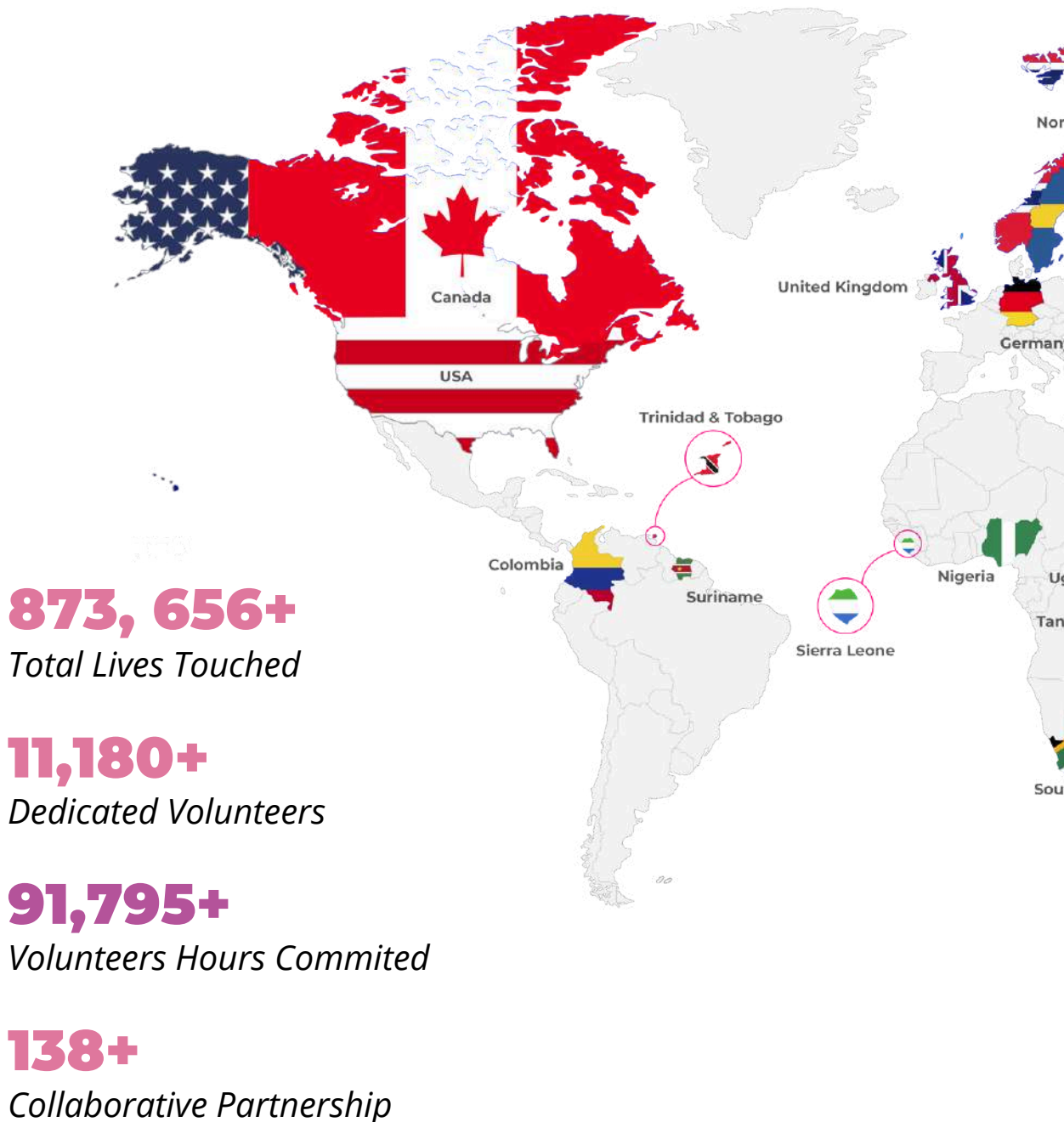
Chief Executive Officer,  
SITAL PARIVAR



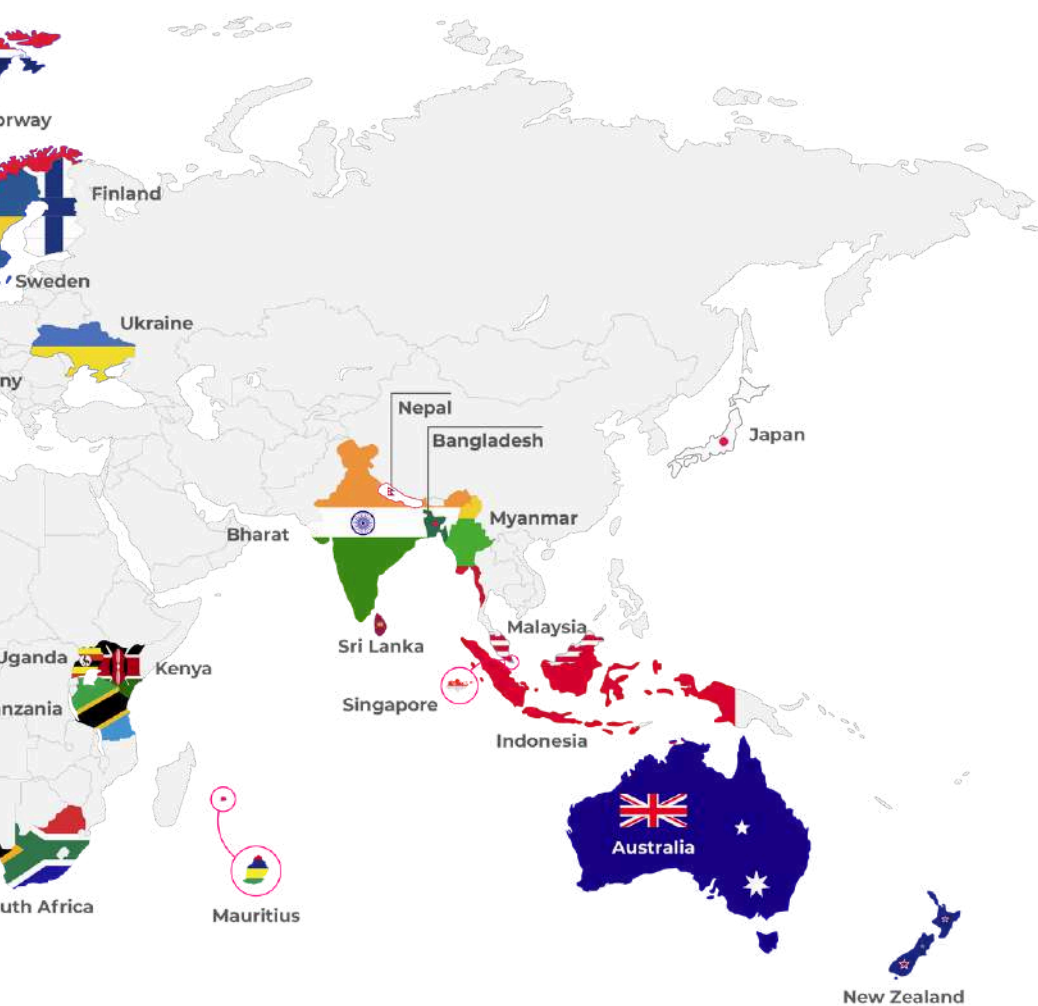


# Global Presence

Sewa International is committed to creating transformative change in society by fostering positive impact. Its various initiatives have gained recognition and been highlighted by esteemed national and international media houses at the grassroots level. From prominent publications to trending social media platforms, Sewa's innovative initiatives and impactful



projects have garnered the attention of journalists and were able to bring out a change in the society. Through compelling narratives and engaging content, Sewa International has generated significant visibility, drawing widespread interest and support.





---

# AWARDS & RECOGNITION

---



## *Serving Humanity with Dedication and Integrity Award*

---

### **Paramount Softwares Company**

Sewa International feels ecstatic to share that we have been recognised and awarded for our humanitarian endeavours in the social and development field. The award was presented to us by none other than the esteemed actor Sonu Sood, adding a touch of social power to the memorable occasion.



Sewa International would like to extend our heartfelt thanks to Paramount Software Company for acknowledging and recognising our efforts, thus bestowing upon us this prestigious honour. It's a true honour to be recognized for our dedication to serving the community, and we are deeply humbled by this gesture.



---

### **Fitch Solutions India Advisory Pvt. Ltd.**

Sewa International has achieved a significant milestone by being recognized as the Best-in-class NGO with exceptional operational and financial performance by Fitch Solution India Advisory Private Limited (FSIAPL). This recognition is a testament to the organisation's unwavering commitment to upholding a strong and ethical working culture, based on core values of mutual trust, respect, and gratitude.

# Sewa in Media





Sewa International's media presence has been instrumental in driving meaningful change, leaving a lasting impression. Its groundbreaking initiatives and impactful projects have garnered significant attention from prominent publications and social media platforms, resonating with journalists and influencers. By leveraging compelling storytelling, Sewa International has effectively generated excitement and interest, drawing widespread support and engagement.





# Finance Report

## Donations Category Wise

	Overseas	21,48,27,550.59
	Government	51,72,197.72
	Corporate	3,54,49,560.00
	Others	2,47,13,967.29
Total		28,01,63,275.60

## Components of Expenses on Domain-wise

	Education and Skill Development	12,47,15,752.73	43.39%
	Women Empowerment	73,49,063.00	2.56%
	Disaster Management	2,54,30,893.73	8.85%
	Health	4,30,97,695.37	14.99%
	Livelihood	6,34,40,938.53	22.07%
	Tribal Welfare	40,44,182.00	1.41%
	Environment	19,82,656.00	0.69%
	Other Social Welfare Projects	1,73,55,126.70	6.04%
Total		28,74,16,308.06	100%

# Balance Sheet

Liabilities	As on 31/03/2024	As on 31/03/2023
	Current Year (Rs.)	Previous Year (Rs.)
<b>Capital</b>	28,70,001.00	28,70,001.00
<b>Income and Expenditure</b>	31,82,71,511.66	38,37,57,576.54
<b>Medical Fund (Niti Chada)</b>	15,00,000.00	15,00,000.00
<b>Long Term Borrowings</b>		
Loan From NSDC	65,73,683.36	1,02,07,251.00
<b>Current Liabilities and provisions</b>		
Sundry Creditors	25,42,247.05	15,03,665.60
Other Expenses Payable	6,38,262.00	5,32,720.00
Interest Payable on Loan- NSDC	92,957.24	1,40,466.39
Amount payable to JV Partner F-Tech against PMKK Receipts	27,59,748.47	
Statutory Dues Payable	1,22,933.50	1,91,176.50
<b>Total</b>	<b>33,53,71,344.28</b>	<b>40,07,02,857.03</b>

Assets	As on 31/03/2024	As on 31/03/2023
	Current Year (Rs.)	Previous Year (Rs.)
<b>Fixed Assets</b>	9,92,39,857.24	11,37,89,601.52
Capital Work in Progress	1,46,64,551.36	62,15,865.00
<b>Investments</b>		
FDR With Bank	11,20,34,559.00	18,85,14,559.00
Interest Accrued on FDs But not Received	1,75,43,577.00	1,45,88,882.00
<b>Current Assets</b>		
Income Tax Receivable	21,34,180.00	19,08,816.00
Security Deposits	5,73,300.00	5,60,100.00
Amount Receivable from Foresight Edutech Pvt. Ltd.	58,56,107.21	1,17,87,070.00
Advances	1,28,60,410.82	1,01,57,448.82
<b>Cash in Hand</b>		
Cash in Hand	3,21,011.75	3,75,000.75
<b>Balance with Banks</b>		
Cash at Bank	7,01,43,789.90	5,28,05,513.94
<b>Total</b>	<b>33,53,71,344.28</b>	<b>40,07,02,857.03</b>



# Annual Report 2023-24

## Contact Us

Sewa International, First Floor, Plot 8,  
Site II, Near SD Public School,  
West Patel Nagar, New Delhi - 110008

+91-11-43007650

[contact@sewainternational.org](mailto:contact@sewainternational.org)  
[sewainternationaldelhi@gmail.com](mailto:sewainternationaldelhi@gmail.com)

Follow us on



12A

AABTS7591ME2021401

FCRA

231660106

80G

AABTS7591MF2021401

CSR-1

CSR00000559